

CORPORATION OF THE TOWN AMHERSTBURG
BY-LAW NO. 2020-002

A By-law to remove certain lands from Part Lot Control
(Registered Plan 12M505)
(Big Creek Subdivision)

WHEREAS Subsection 5 of Section 50 of the Planning Act, R.S.O 1990, Chapter P13 provides that Part Lot Control shall apply where land is within a plan of subdivision;

AND WHEREAS Subsection 7 of Section 50 of the Planning Act provides that Council may by by-law provide that Subsection 5 does not apply to land that is within such a registered plan of subdivision or part of parts thereof as is or are designated in the by-law, and, where the by-law is approved by the County of Essex, Subsection 5 ceases to apply to such land;

And WHEREAS it is deemed desirable that the provision of Subsection 5 shall not apply to certain lands within Registered Plan 12M505.

AND WHEREAS Subsection 7.3 of Section 50 of the Planning Act provides that the by-law expires at the expiration of the time frame specified in the by-law.

NOW THEREFORE THE COUNCIL OF THE CORPORATION OF THE TOWN OF AMHERSTBURG HEREBY ENACTS AS FOLLOWS:

1. Subsection 5 of Section 50 of the Planning Act, RSO 1990, Chapter P13 does not apply to the following;

All and singular those certain parcels or tracts of land and premises situate, lying and being in the Town of Amherstburg, the County of Essex, and Province of Ontario and being composed of lots 28, 29, and 30 on Plan 12M505, being parts 7, 8, 9, 10, 11, and 12 and parts 55, 56, 57, 58, 59, and 60 on Reference Plan 12R27409.

2. That this By-Law shall come into force and effect upon approval thereof by the County of Essex.

This By-law shall expire on the 13th day of January, 2022.

Read a first, second and third time and finally passed this 13th day of January 2020.

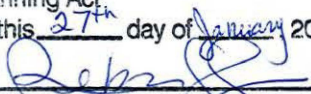
Deputy Mayor
Leo Meloche

~~MAYOR ALDO DICARLO~~

~~CLERK PAULA PARKER~~

APPROVED pursuant to section 50 (7) of
the Planning Act

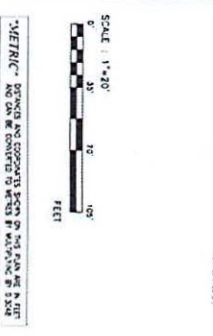
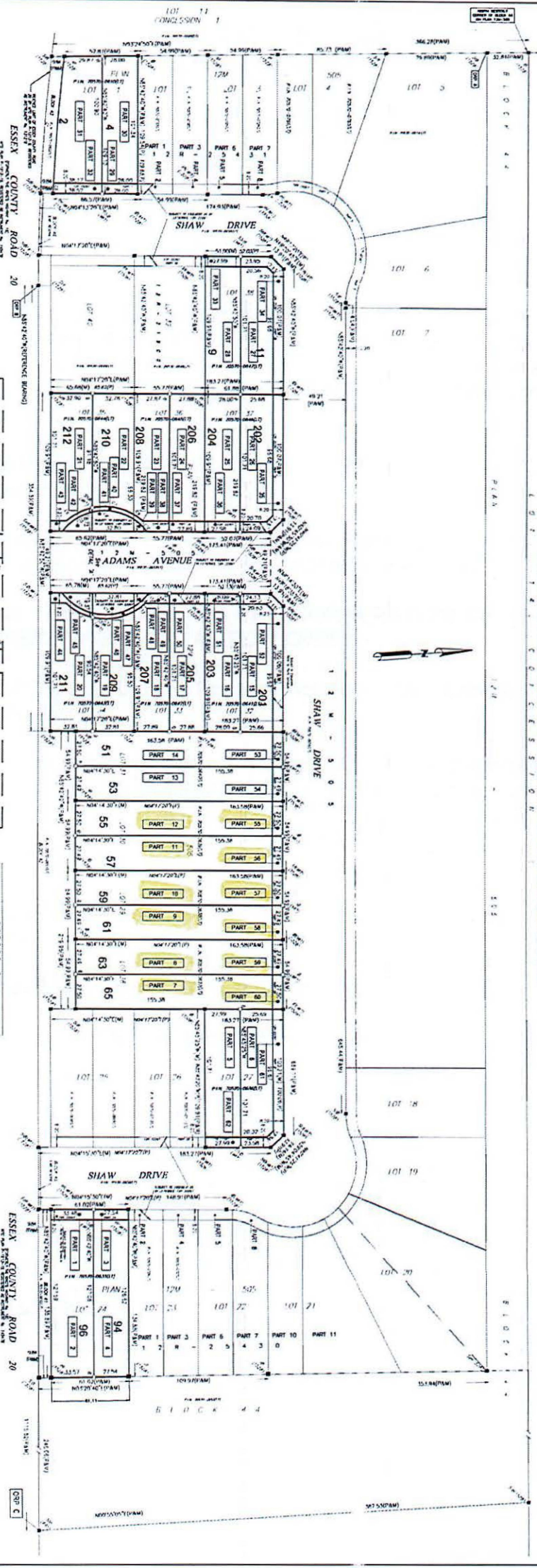
Dated this 27th day of January 2020


REBECCA BELANGER, MCIB, RPP
Manager, Planning Services
County of Essex

PARCELS	DATE	REMARKS
1	1/20/2018	...
2	1/20/2018	...
3	1/20/2018	...

PARIS SCHEDULE			PARIS SCHEDULE			PARIS SCHEDULE			PARIS SCHEDULE			PARIS SCHEDULE			PARIS SCHEDULE			PARIS SCHEDULE		
PAR	LT	AREA	PAR	LT	AREA	PAR	LT	AREA	PAR	LT	AREA	PAR	LT	AREA	PAR	LT	AREA	PAR	LT	AREA
1	1	101.14	1	1	101.14	1	1	101.14	1	1	101.14	1	1	101.14	1	1	101.14	1	1	101.14
2	2	101.14	2	2	101.14	2	2	101.14	2	2	101.14	2	2	101.14	2	2	101.14	2	2	101.14
3	3	101.14	3	3	101.14	3	3	101.14	3	3	101.14	3	3	101.14	3	3	101.14	3	3	101.14
4	4	101.14	4	4	101.14	4	4	101.14	4	4	101.14	4	4	101.14	4	4	101.14	4	4	101.14
5	5	101.14	5	5	101.14	5	5	101.14	5	5	101.14	5	5	101.14	5	5	101.14	5	5	101.14
6	6	101.14	6	6	101.14	6	6	101.14	6	6	101.14	6	6	101.14	6	6	101.14	6	6	101.14
7	7	101.14	7	7	101.14	7	7	101.14	7	7	101.14	7	7	101.14	7	7	101.14	7	7	101.14
8	8	101.14	8	8	101.14	8	8	101.14	8	8	101.14	8	8	101.14	8	8	101.14	8	8	101.14
9	9	101.14	9	9	101.14	9	9	101.14	9	9	101.14	9	9	101.14	9	9	101.14	9	9	101.14
10	10	101.14	10	10	101.14	10	10	101.14	10	10	101.14	10	10	101.14	10	10	101.14	10	10	101.14
11	11	101.14	11	11	101.14	11	11	101.14	11	11	101.14	11	11	101.14	11	11	101.14	11	11	101.14

NOTE: 1 - PARIS SCHEDULE IS FOR THE PURPOSES OF THE PARIS SCHEDULE ONLY. IT IS NOT TO BE USED FOR ANY OTHER PURPOSE. THE PARIS SCHEDULE IS SUBJECT TO THE PARIS SCHEDULE ACT AND THE PARIS SCHEDULE REGULATIONS.



DISTANCES
COVERED BY THIS PLAN ARE IN METERS
COVERED BY THIS PLAN ARE IN METERS
COVERED BY THIS PLAN ARE IN METERS



PAR	LT	AREA	PAR	LT	AREA
1	1	101.14	1	1	101.14
2	2	101.14	2	2	101.14
3	3	101.14	3	3	101.14
4	4	101.14	4	4	101.14
5	5	101.14	5	5	101.14
6	6	101.14	6	6	101.14
7	7	101.14	7	7	101.14
8	8	101.14	8	8	101.14
9	9	101.14	9	9	101.14
10	10	101.14	10	10	101.14
11	11	101.14	11	11	101.14
12	12	101.14	12	12	101.14
13	13	101.14	13	13	101.14
14	14	101.14	14	14	101.14
15	15	101.14	15	15	101.14
16	16	101.14	16	16	101.14
17	17	101.14	17	17	101.14
18	18	101.14	18	18	101.14
19	19	101.14	19	19	101.14
20	20	101.14	20	20	101.14
21	21	101.14	21	21	101.14
22	22	101.14	22	22	101.14
23	23	101.14	23	23	101.14
24	24	101.14	24	24	101.14
25	25	101.14	25	25	101.14
26	26	101.14	26	26	101.14
27	27	101.14	27	27	101.14
28	28	101.14	28	28	101.14
29	29	101.14	29	29	101.14
30	30	101.14	30	30	101.14
31	31	101.14	31	31	101.14
32	32	101.14	32	32	101.14
33	33	101.14	33	33	101.14
34	34	101.14	34	34	101.14
35	35	101.14	35	35	101.14
36	36	101.14	36	36	101.14
37	37	101.14	37	37	101.14
38	38	101.14	38	38	101.14
39	39	101.14	39	39	101.14
40	40	101.14	40	40	101.14
41	41	101.14	41	41	101.14
42	42	101.14	42	42	101.14
43	43	101.14	43	43	101.14
44	44	101.14	44	44	101.14
45	45	101.14	45	45	101.14
46	46	101.14	46	46	101.14
47	47	101.14	47	47	101.14
48	48	101.14	48	48	101.14
49	49	101.14	49	49	101.14
50	50	101.14	50	50	101.14
51	51	101.14	51	51	101.14
52	52	101.14	52	52	101.14
53	53	101.14	53	53	101.14
54	54	101.14	54	54	101.14
55	55	101.14	55	55	101.14
56	56	101.14	56	56	101.14
57	57	101.14	57	57	101.14
58	58	101.14	58	58	101.14
59	59	101.14	59	59	101.14
60	60	101.14	60	60	101.14

LEGEND
1. BOUNDARY LINE
2. EASEMENT
3. SETBACK
4. UTILITY LINE
5. ROAD CENTERLINE
6. CURB LINE
7. SIDEWALK LINE
8. DRIVEWAY LINE
9. FENCE LINE
10. FENCE POST
11. FENCE RAIL
12. FENCE BRACE
13. FENCE CAP
14. FENCE FOOTING
15. FENCE FOUNDATION
16. FENCE POST HOLES
17. FENCE RAIL HOLES
18. FENCE BRACE HOLES
19. FENCE CAP HOLES
20. FENCE FOOTING HOLES
21. FENCE FOUNDATION HOLES
22. FENCE POST HOLES
23. FENCE RAIL HOLES
24. FENCE BRACE HOLES
25. FENCE CAP HOLES
26. FENCE FOOTING HOLES
27. FENCE FOUNDATION HOLES

SEVEN'S CERTIFICATE
I, the undersigned, being a duly qualified and licensed Professional Engineer, do hereby certify that the above is a true and correct copy of the original plan as filed with me, and that the same is in accordance with the provisions of the Act.

DATE: APRIL 20, 2018
BY: [Signature]

Total Tech Surveying Inc.
341 500 St. N.
Essex, Ontario N8W 2J4
(519) 781-8887

PLAN 12R-27409
RECORDED AND DEPOSITED
DATE: APRIL 20, 2018
BY: [Signature]
LINDA BURSEY
RESPONSIBLE FOR LAND
DIVISION OF ESSEX (19)

PLAN OF SURVEY
OF
LOTS 1, 24, and LOTS 27 - 38
ON PLAN 12M-505,
IN THE
TOWN OF AMHERSTBURG
COUNTY OF ESSEX, ONTARIO
TOTAL TECH SURVEYING INC.