



# SWIFT

---

SouthWestern Integrated Fibre Technology

Essex County Council  
Essex, ON  
April 19, 2017

**\$90 MILLION  
FEDERAL  
FUNDING**

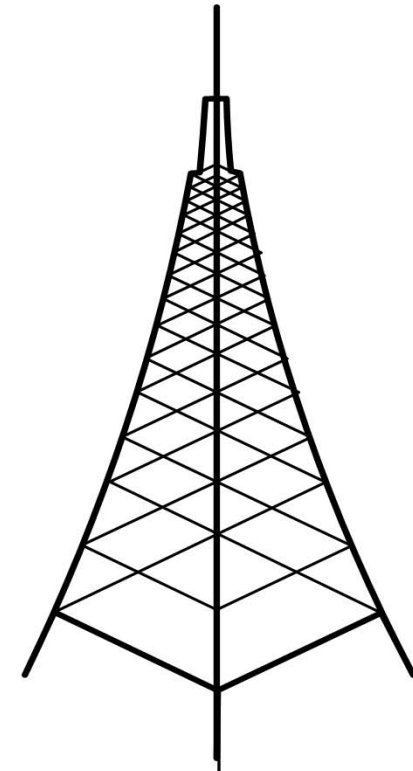
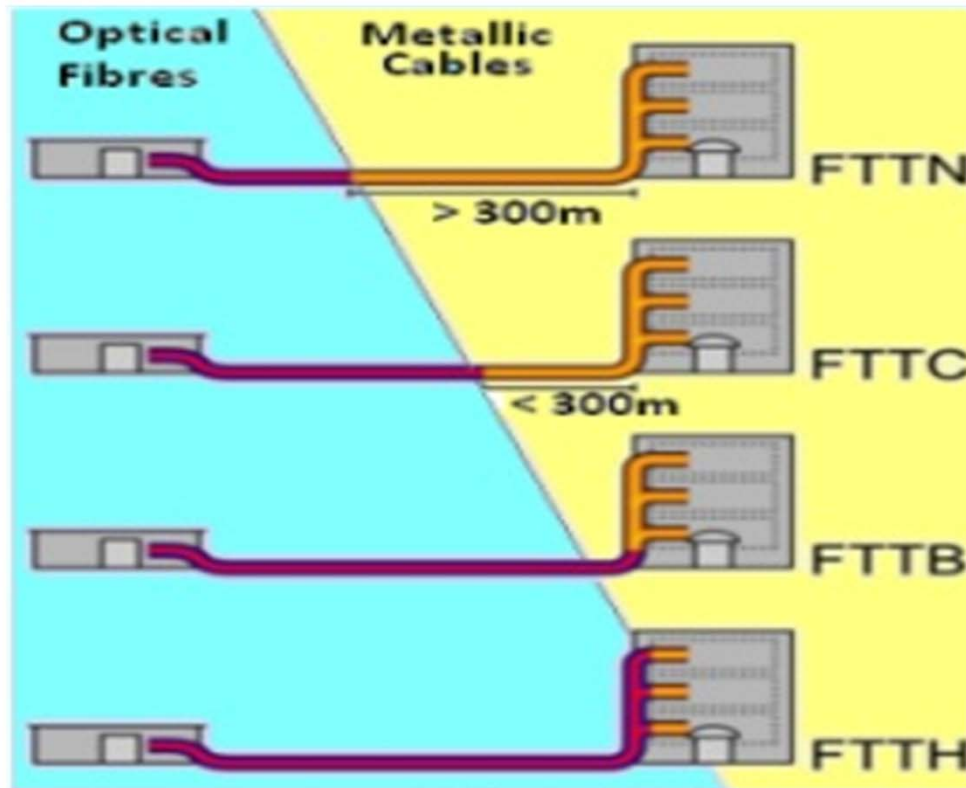
**\$90 MILLION  
PROVINCIAL  
FUNDING**

**PHASE 1:  
\$288 MILLION**

**\$90 MILLION  
PRIVATE SECTOR  
FUNDING**

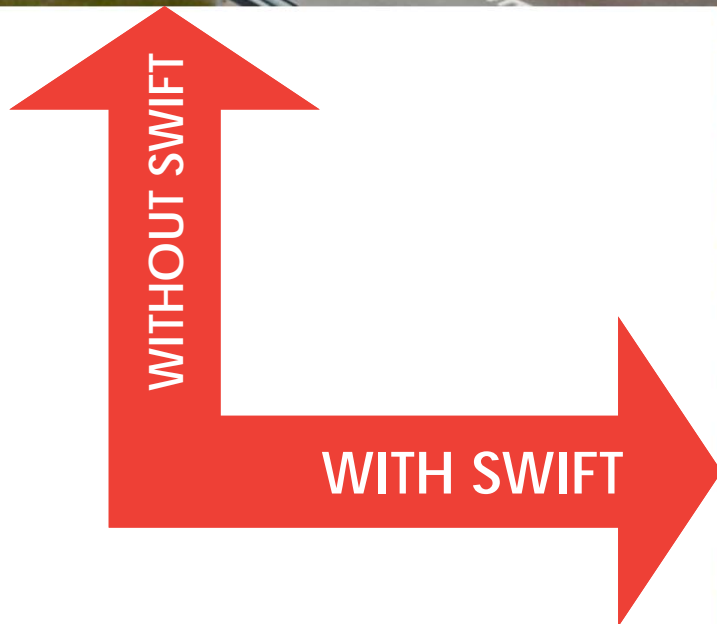
**\$18 MILLION  
MUNICIPAL  
FUNDING**

# FUTURE-PROOF + FIBRE-ONLY.





WE'RE  
COMMITTED  
TO  
OPEN ACCESS



Image/Slide Attribution: Entry Point Networks



# Phases of Project

- Issue RFPQ (May 12, 2017 target)
  - Pre-Qualifies Financial ability etc.
  - Requires location of providers fibre and points of presence
- Analysis of RFPQ data
- Provider / user consultation
- Construction plan developed
- Business case finalized (October 2017 target)

**1**

- RFP's released (Q4 2017)
- Master Service Agreements (MSA) signed with providers (Q2-Q3 2018)

**2**

- Build Network (Construction starts early 2018)

**3**

Post construction - Broadband Development Fund (BDF) collects funds and provides ongoing subsidy for future builds

1. Data from providers collected and analyzed
2. Construction schedule and costs finalized



# SWIFT Board of Directors (15)

- Gerry Marshall (Simcoe County Warden), Chair
- Bev MacDougal (Lambton County Councillor), Vice
- Mitch Twolan (Bruce County Warden)
- Randy Hope (Chatham-Kent Mayor)
- George Bridge (Wellington County Councillor)
- Jim Maudsley (Middlesex County Councillor)
- Roger Watt (Huron County Councillor)
- David Mayberry (Oxford County Warden)
- April Jeffs (Niagara Region Council member)
- Allan Thompson (Town of Caledon Mayor)
- Stephen Young – (TVDSB IT Manager)
- MaryLynn West-Moynes (President Georgian College)
- Bill Van Wyck  
(President The W. R. Van Wyck Group Limited)
- Brent Royce (OFA board member)
- Chief Greg Peters (Delaware Nation)

Appointed  
by WOWC

Contributing  
Members

Regular  
Members

# GUIDING PRINCIPLES

1. Standards based architecture
2. High availability and Scalability
3. Neutrality and Open Access
- 4. Ubiquity and Equitability**
5. Competition and Affordability
6. Broad community participation
7. Sustainability

# TIMELINE

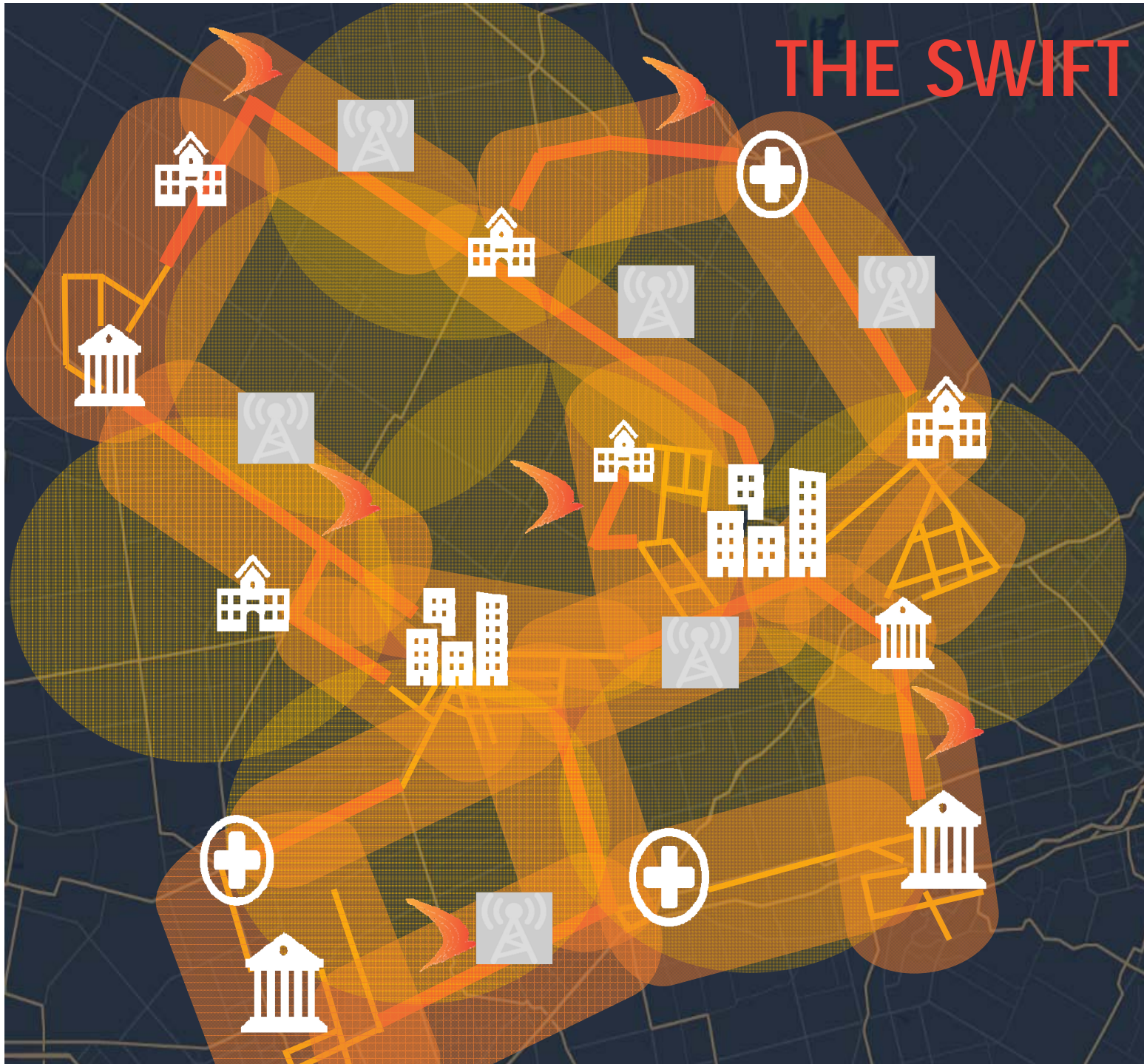
Milestone	Dates
Funding Announced	July 26 2016
Municipal Partner Agreements	Q2 2017
Contribution Agreement Signed with Funders	Q2 2017
User Consultation	Q1 – Q4 2017
RFPQ Released (target)	Q2 2017
RFP Released	Q4 2017
Telecom Service Provider MSA/SLAs Signed	Q1-Q3 2018
Construction (Phase 1)	2018 - 2022
SWIFT Operational (BDF accrues)	2021-onward

\*Dates are best estimates and subject to change as the project evolves.



# THE SWIFT EFFECT

## Phase 1



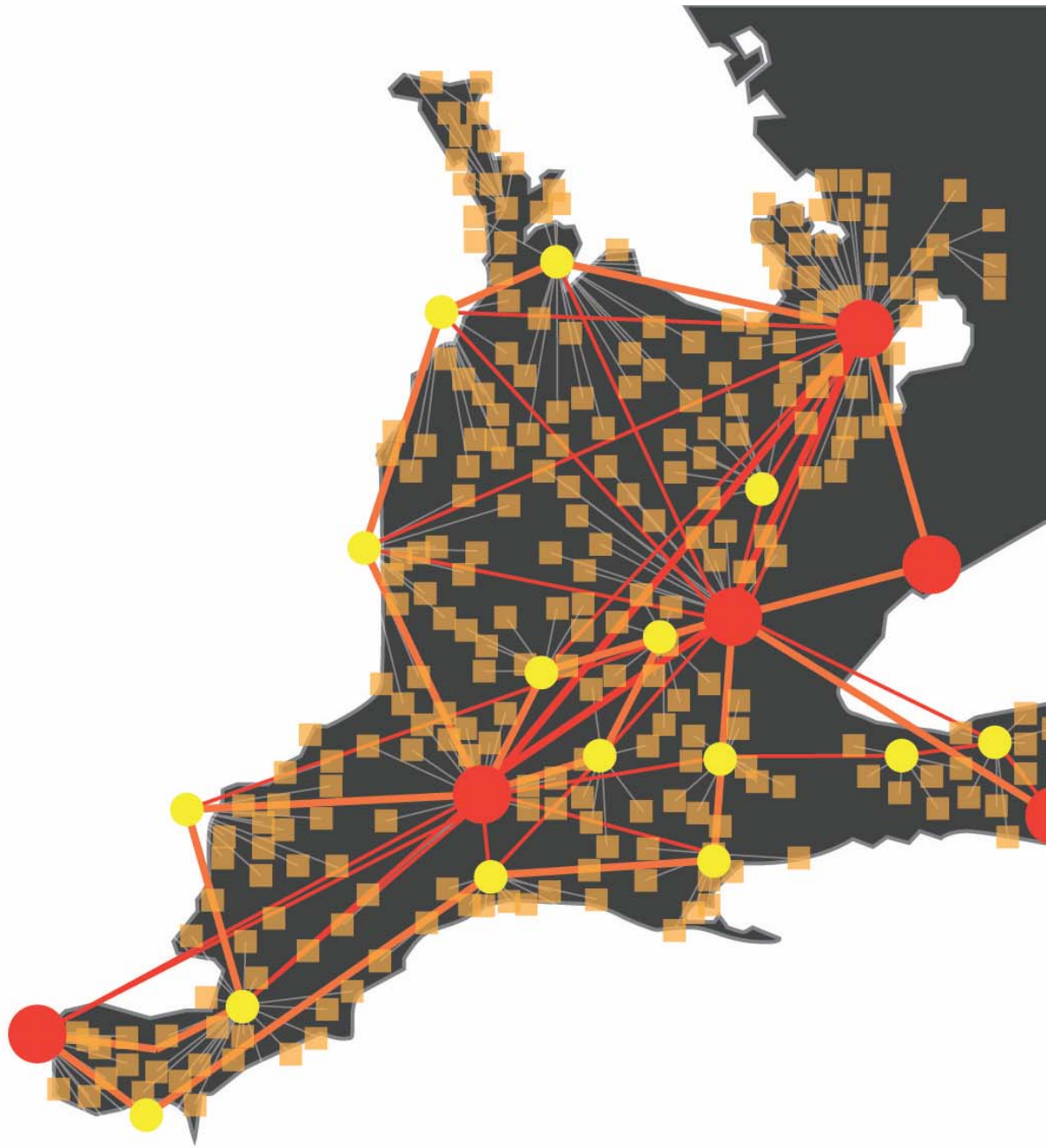
Existing  
Fibre

SWIFT  
Network  
Point of  
Presence

SWIFT  
Network  
New Build

Private  
Sector  
Fibre  
Diffusion

Better  
Private  
Sector  
Wireless



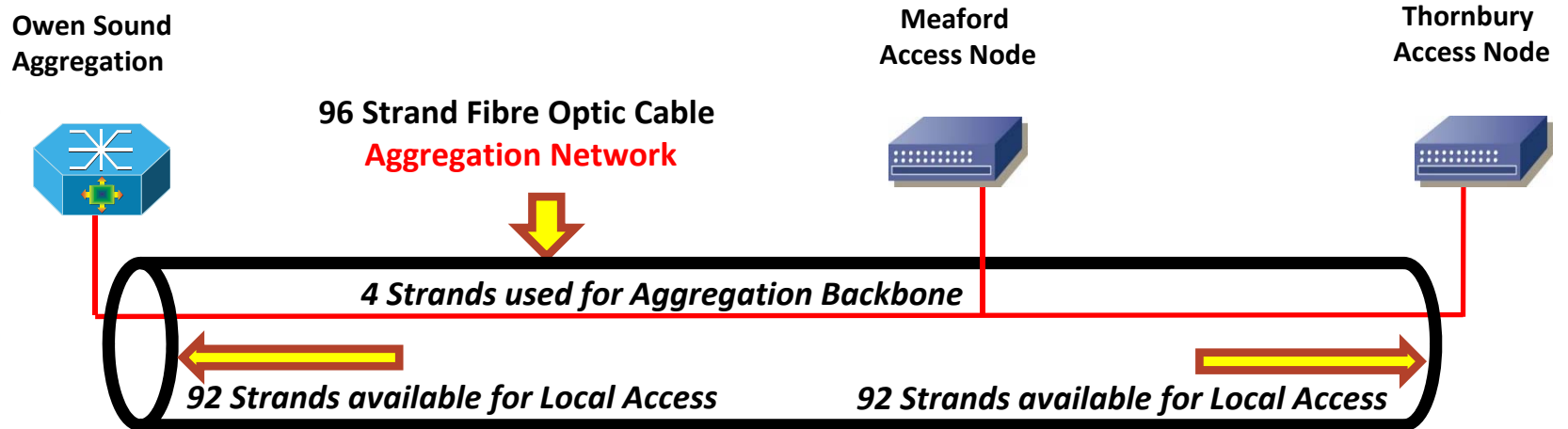
# LEGEND

- OPTIC TRANSPORT NETWORK FUTURE CONNECTIONS
- Access to Aggregation Backbone
- Aggregation to Core Backbone
- Core Network Backbone

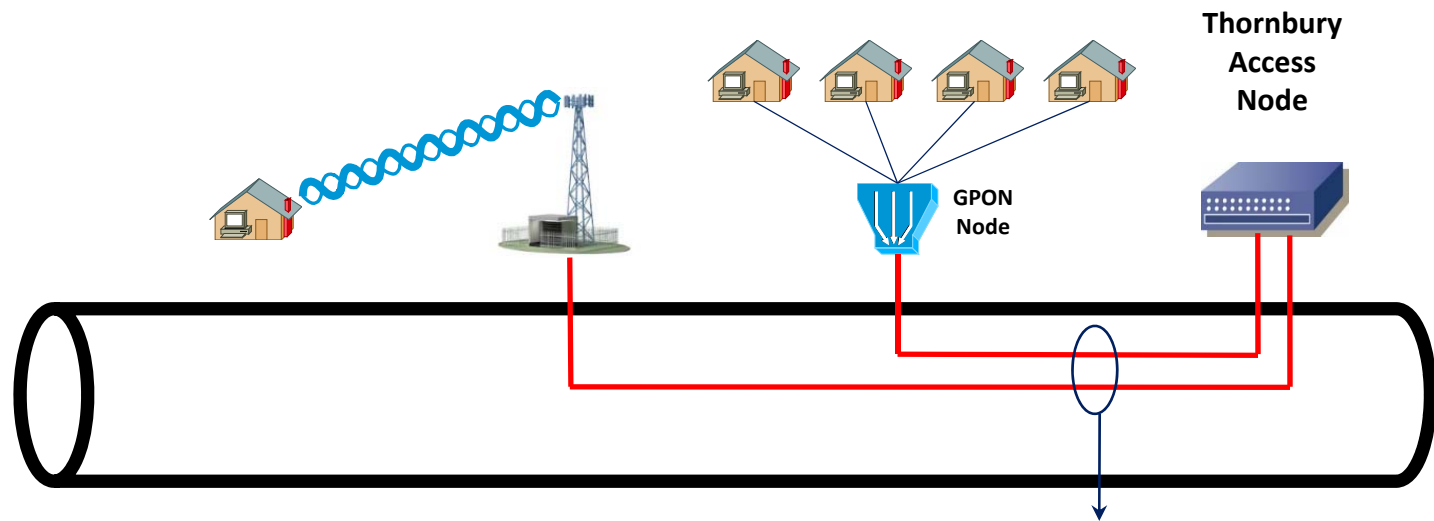
## POINT OF PRESENCE

- Access
- Aggregation
- Core

# Mandating Residual Capacity for Local Access Competition



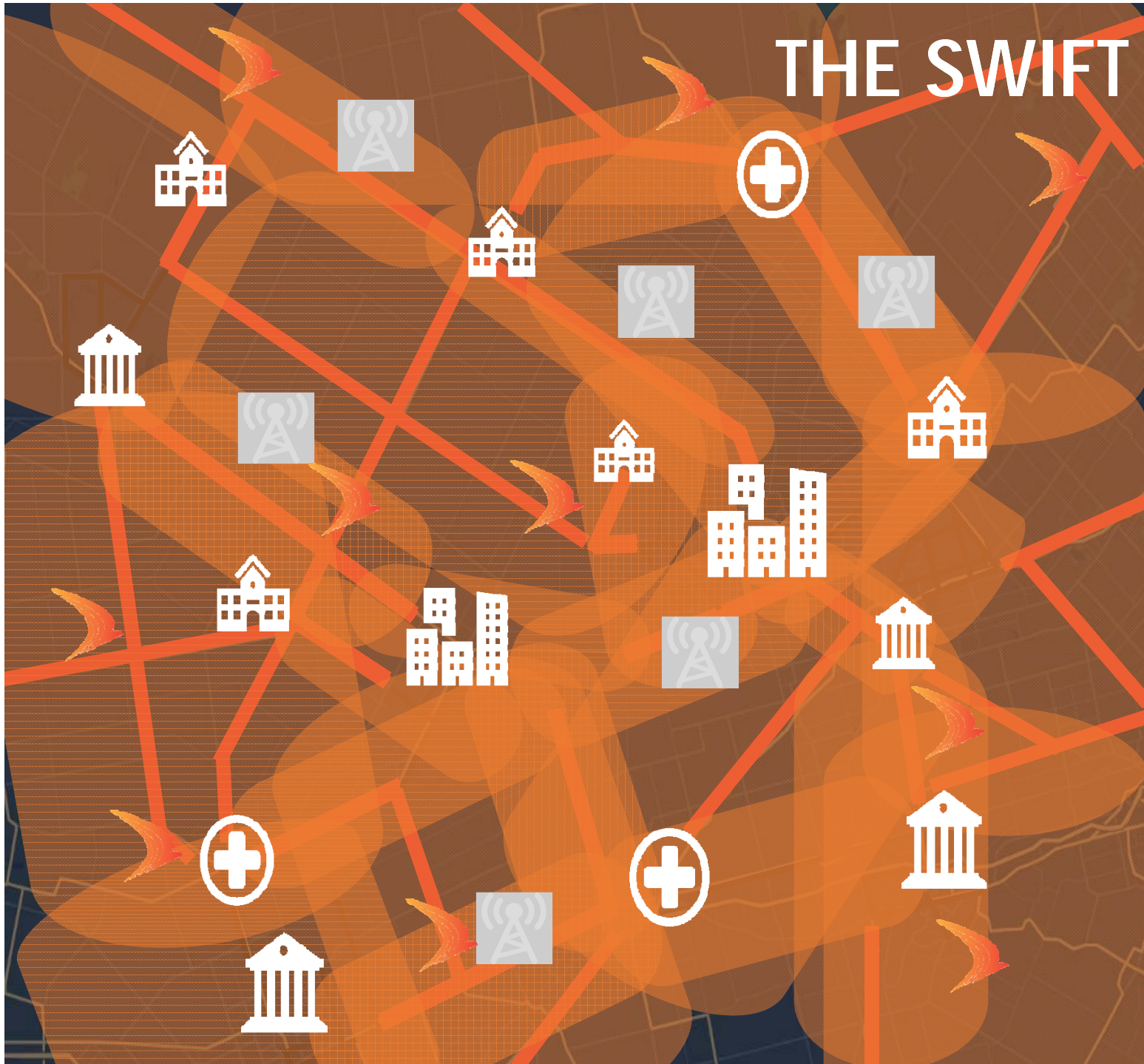
Splice point for future access every 1500m



Competitive Local Access Providers have direct access to colocation and residual fibre optic facilities.

# THE SWIFT EFFECT

Over Time



Existing  
Fibre

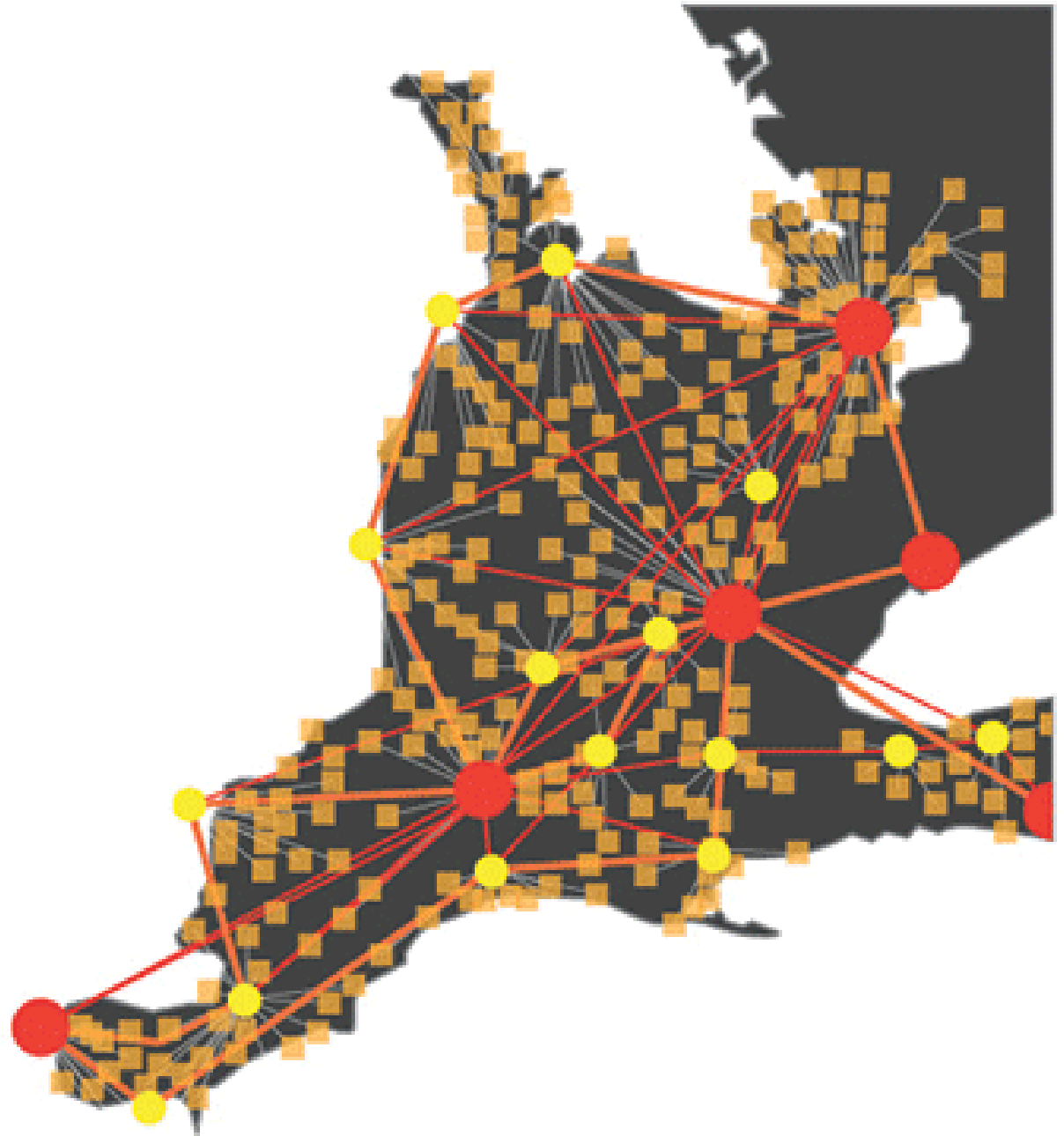
SWIFT  
Network  
Point of  
Presence

SWIFT  
Network  
New Build

Private  
Sector  
Fibre  
Diffusion

**WE'RE  
JUST  
GETTING  
STARTED.**

**SWIFT IS  
FUTURE  
PROOF.**





## What can Partners do to help SWIFT?

- Demand real Open Access for all projects you support outside SWIFT (CTI etc.)
- Gather user data
  - Official Plan data
    - Growth areas
  - Economic Development Data
    - Business parks etc.
- Promote user survey
- Review local permitting requirements
- Pass on contact info for large multi-site business to add to RFPQ/RFP



# Municipal Capital Agreement

- Member Capital Agreement ready for signature
- Member capital contribution now due
  - Refundable \$ 702,843
  - Non-refundable \$ 398,181
  - Total \$ 1,101,024
  - Due in 2017 (3/5) \$ 660,614 \*
- Refundable portion can be waived now so BDF funds raised can be reinvested into network to support economic development

\* less contributions made to date



## Why Participate?

- Only program currently fully funded
- Very well thought out plan that has had 2 positive third party reviews
- Project has scale to hire best experts
- Sustainable over time with BDF
- BPS working together will get best pricing for partners (CW-E x 10)
- Targeted to improve all areas of Essex including SILEC and Bell / Cogeco territory





Questions?

[swiftnetwork.ca](http://swiftnetwork.ca)  
[facebook.com/networkswift](https://facebook.com/networkswift)  
[twitter.com/networkswift](https://twitter.com/networkswift)

Geoff Hogan  
[@geoffhogan](https://twitter.com/geoffhogan)  
[Geoff.Hogan@swiftnetwork.ca](mailto:Geoff.Hogan@swiftnetwork.ca)