

R. Lucente Engineering Inc.

From: "Scott Patterson" <spatterson@peil.net>
To: "Tom Bateman" <TBateman@countyofessex.on.ca>; <rlucente@bellnet.ca>
Cc: "Scott Arbuckle" <sarbuckle@peil.net>; <Ingrid.Ahlblad@cantire.com>
Sent: Friday, January 28, 2005 1:21 PM
Attach: 300c.dwg
Subject: Canadian Tire Leapfrog

Tom/ Rocco

Further to our meeting on January 26, 2005, and as per your request, attached please find an AutoCAD version of the proposed site plan for the Canadian Tire Leapfrog. Please note that this plan is conceptual in nature and is subject to change. Please also note that the layout shown for the Sobey's plaza is not accurate and will need to be updated.

Should you have any questions or concerns or require anything further please do not hesitate to contact our office.

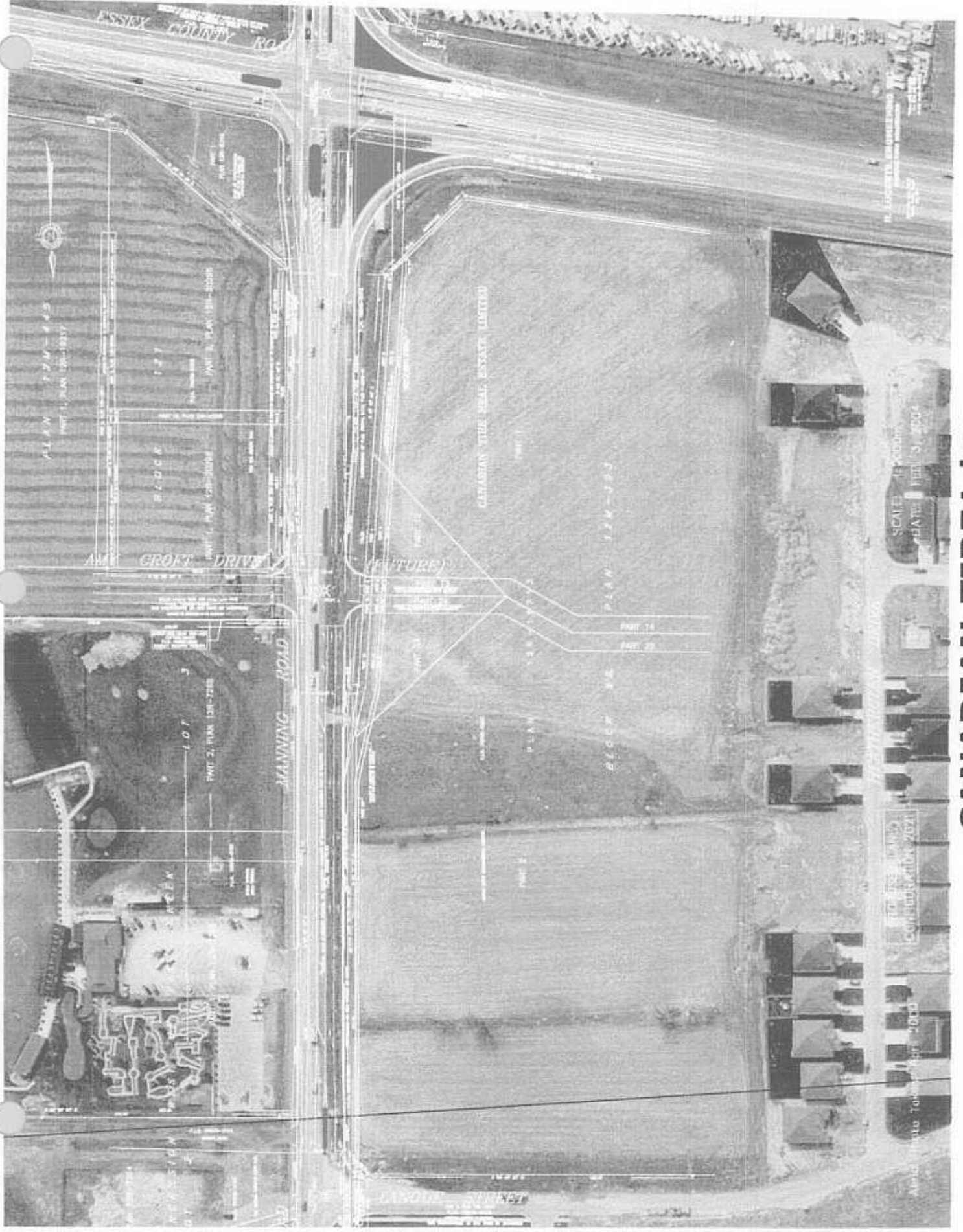
Regards



SCOTT PATTERSON, BA, CPT
PLANNER
PLANNING & ENGINEERING INITIATIVES LTD. (PEIL)

379 QUEEN STREET SOUTH
KITCHENER, ONTARIO N2G 1W6
TEL: (519) 745-9455 EXT. 1105
FAX: (519) 745-7647
E-MAIL: SPATTERSON@PEIL.NET
WEBSITE: WWW.PEIL.NET





CANADIAN-TIRE1.jpg

R. Lucente Engineering Inc.

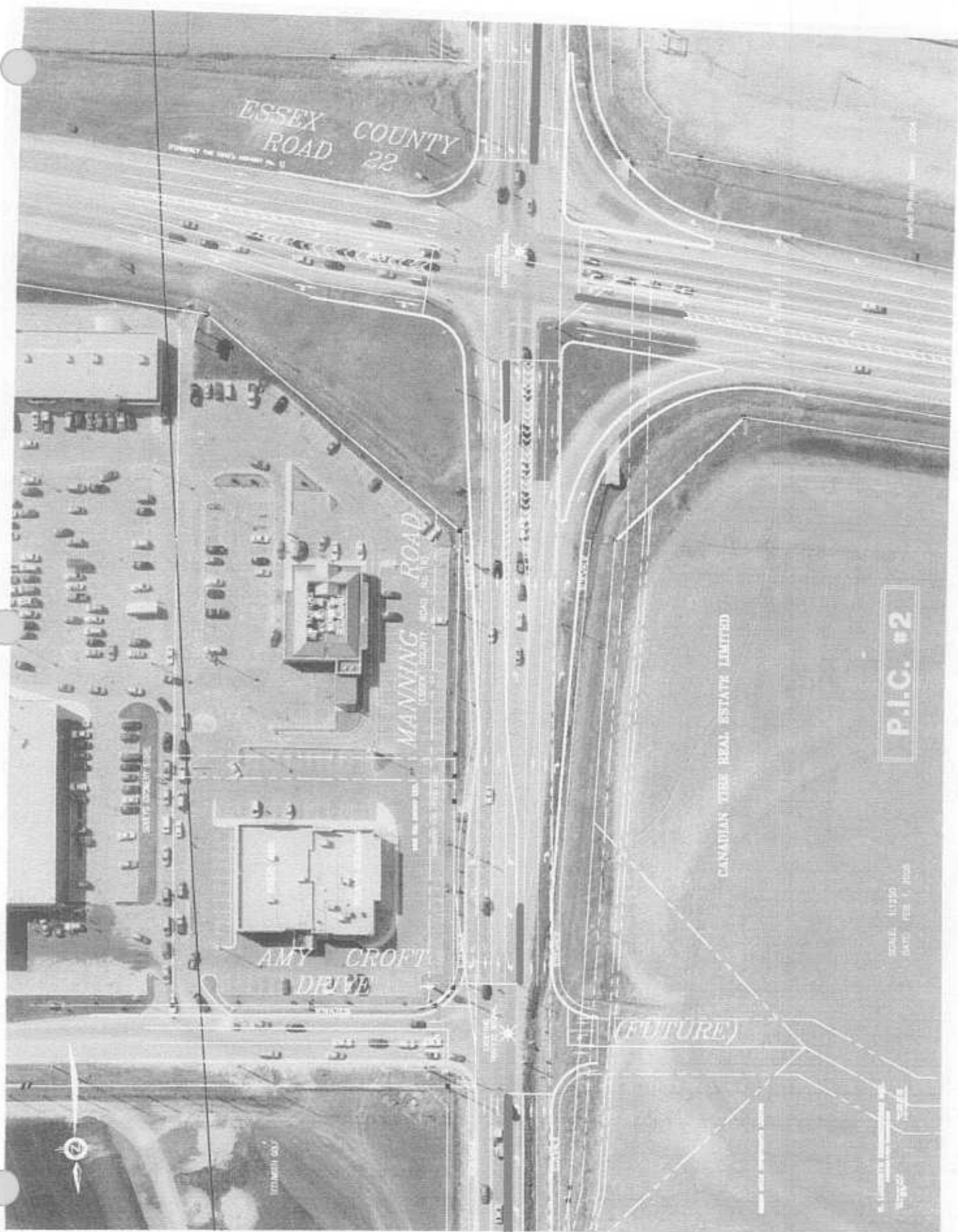
From: "R. Lucente Engineering Inc." <rlucente@bellnet.ca>
To: "Tom Bateman - Essex" <tbateman@countyofessex.on.ca>
Cc: "Larry Beaudoin - Tecumseh" <lbeaudoin@tecumseh.ca>
Sent: Wednesday, February 02, 2005 10:49 AM
Attach: CanTireManning-OPTION2-1.jpg; CanTireManning-OPTION1-1.jpg; CanTireManning-PIC2-1.jpg
Subject: Part 1 - Manning Road Proposed Lanes & Islands

Tom,

We have prepared various options in an effort to offer northbound left turn onto Amy Croft(future) additional storage.

Please review and call to discuss,
Rocco

Note: "Part 2" with Options 3, 4, 5 will follow.

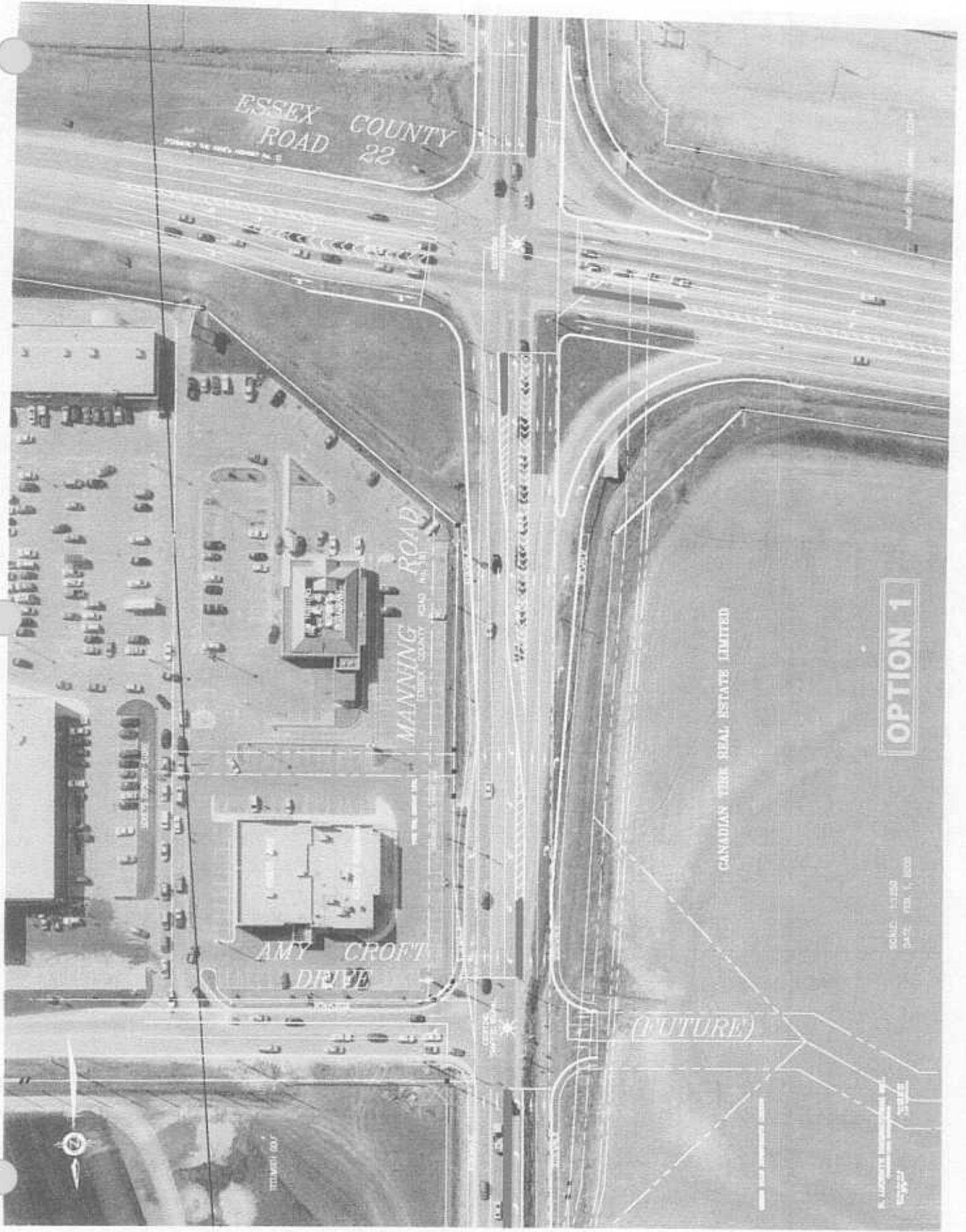


P.I.C. #2

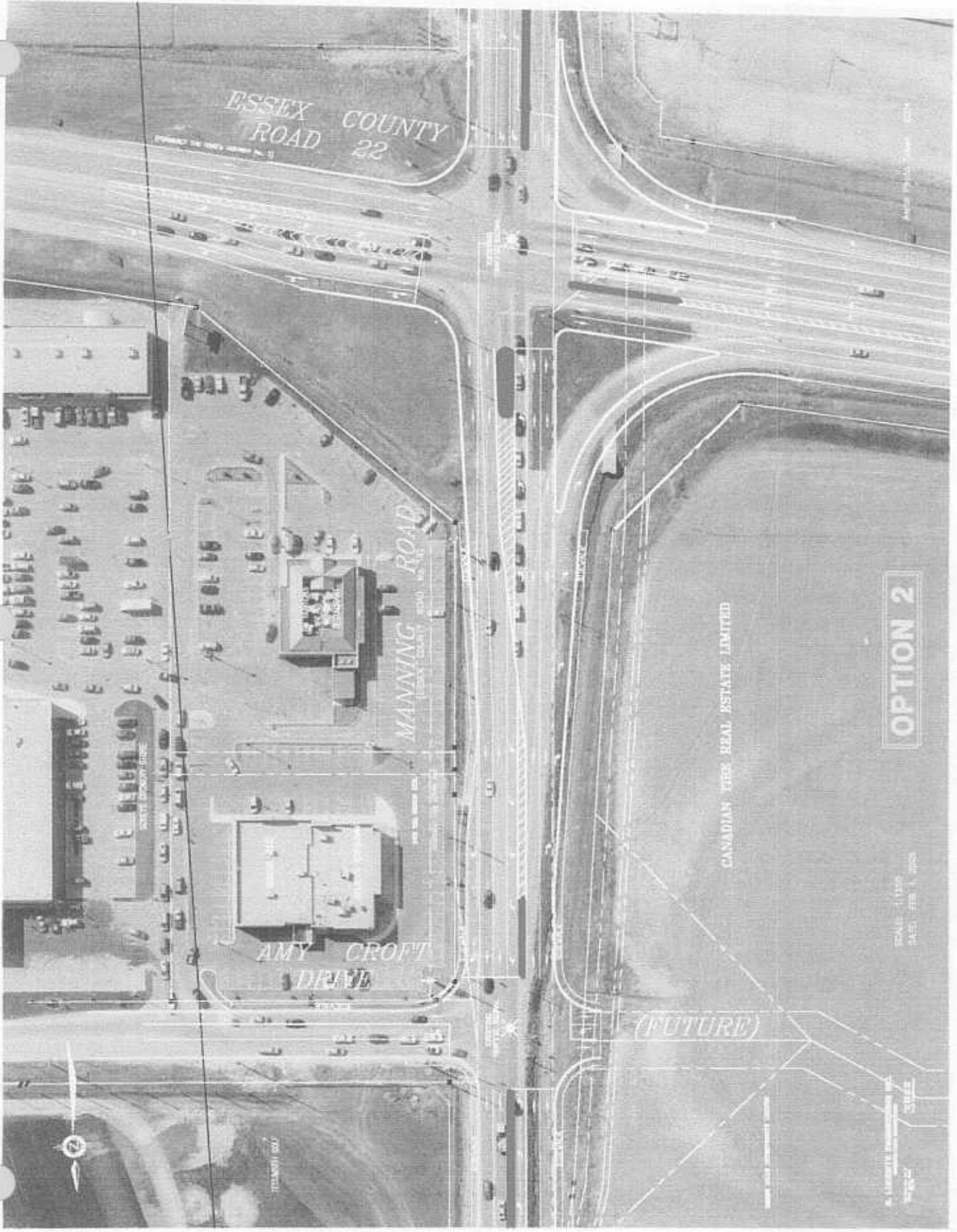
SCALE: 1:1250
DATE: FEB 1, 2008

1. LINDSEY...
2008

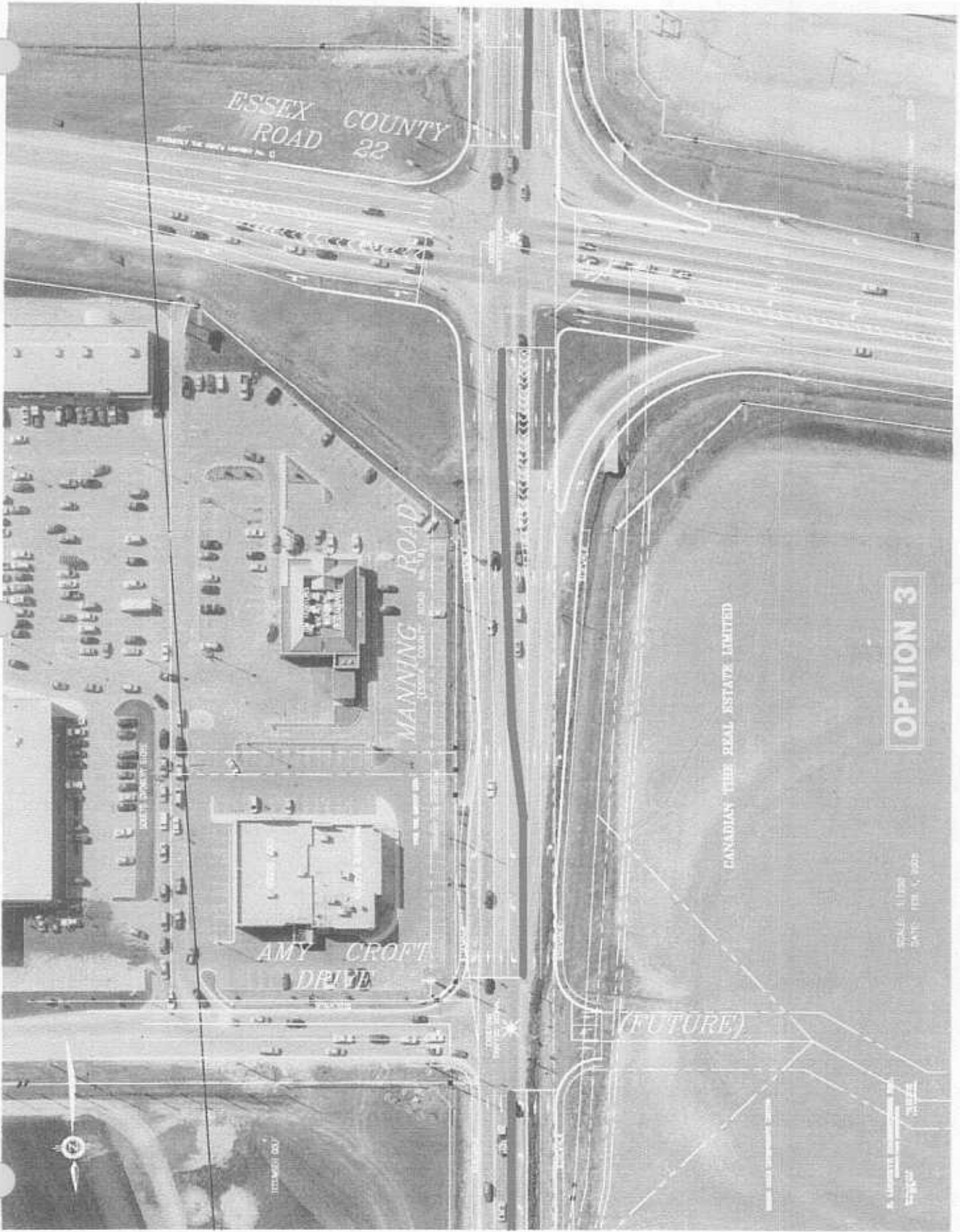
CanTireManning-PIC2-1.jpg



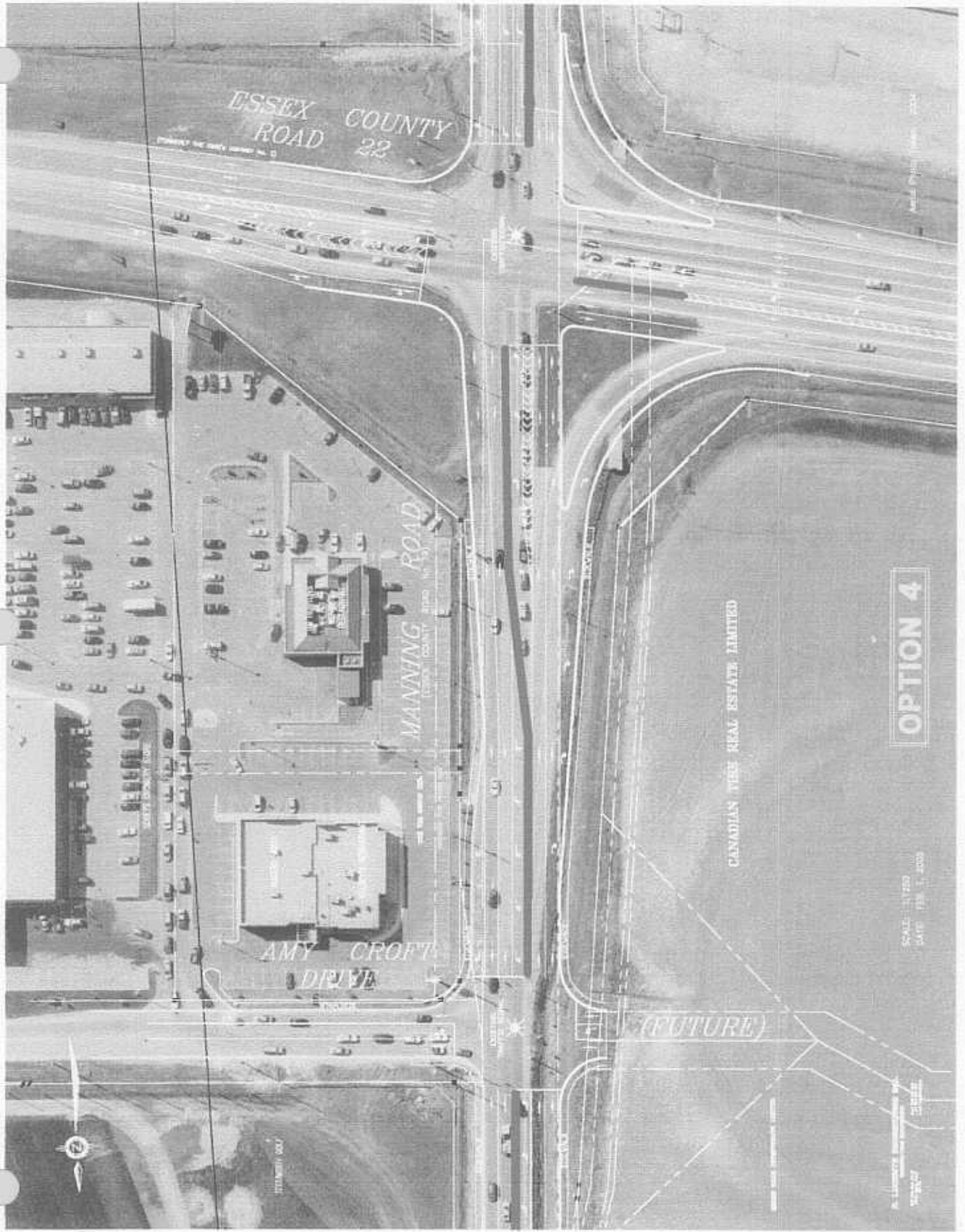
CanTireManning-OPTION1-1.jpg



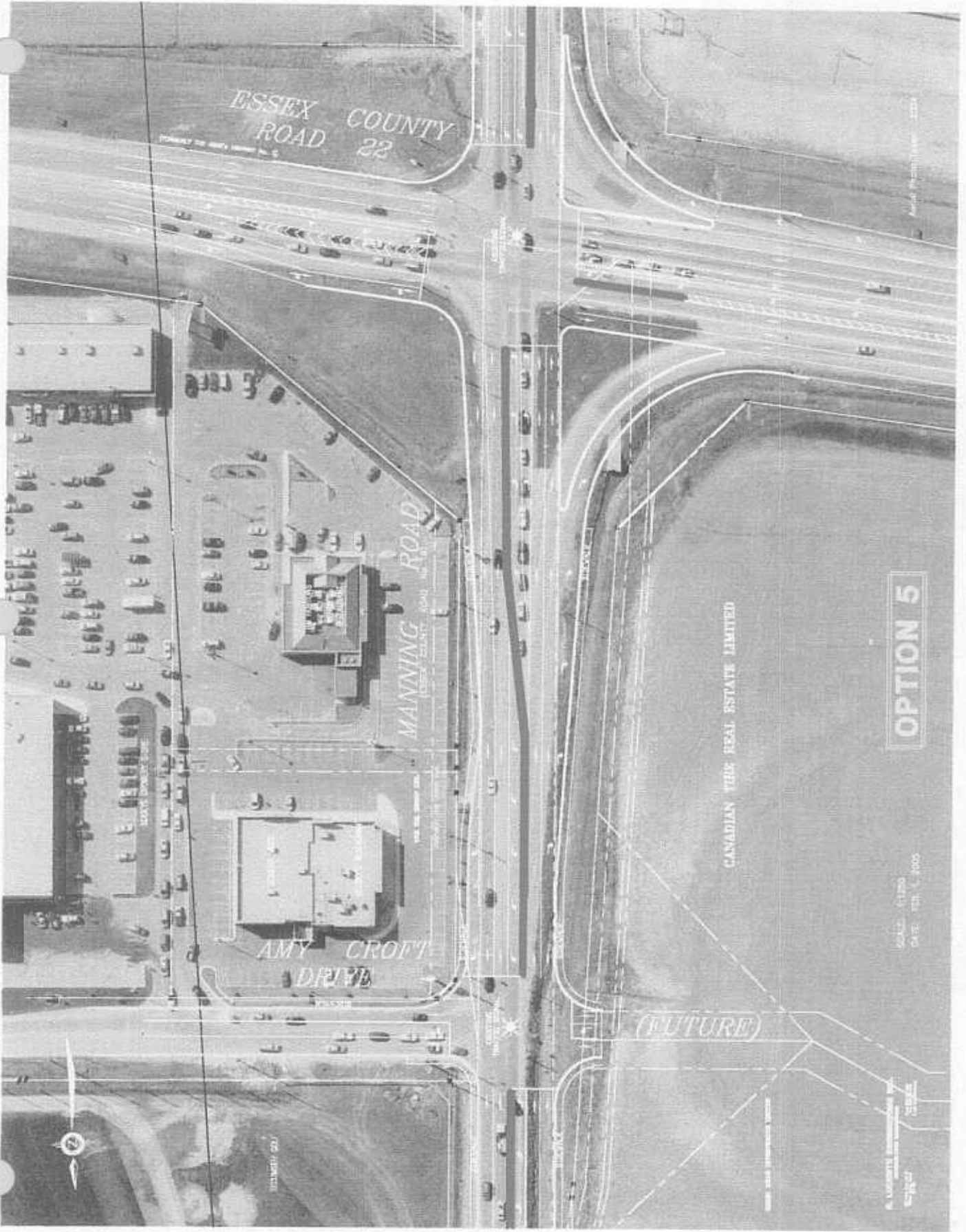
CanTireManning-OPTION2-1.jpg



CanTireManning-OPTION3-1.jpg



CanTireManning-OPTION4-1.jpg



CanTireManning-OPTION5-1.jpg