

THE CORPORATION OF THE TOWN OF AMHERSTBURG

BY-LAW NO. 2010-94

**A by-law to dedicate certain lands in the
Town of Amherstburg as a Public Highway**

AND WHEREAS the Municipal Act, R.S.O. 2001, c.25 Sections 24-68 authorizes the Council of every municipality to pass a by-law for establishing, laying out, acquiring, assuming, or naming a highway;

AND WHEREAS the Council of the Town of Amherstburg did pass by-law 2002-17 April 15, 2002 authorizing the execution of a Subdivision Agreement with Anthony Joseph Tiefenbach;

AND WHEREAS land was previously transferred to the Town for the continuation of Thrasher Drive described as follows:

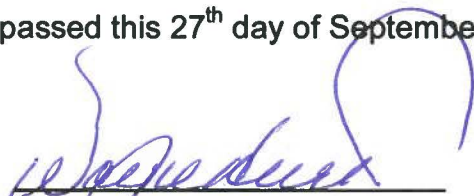
Plan 12M-470 Block 23

Area 625 sq m

NOW THEREFORE THE COUNCIL OF THE CORPORATION OF THE TOWN OF AMHERSTBURG HEREBY ENACTS AS FOLLOWS:

1. That the lands described as Plan 12M-470 Block 23 with an area of 625 square meters shown on "Schedule A" attached hereto, in the Town of Amherstburg, County of Essex, Province of Ontario is hereby established as a public roadway.
2. The provisions of this by-law shall come into force and take effect on the final reading thereof.

Read a first, second and third time and finally passed this 27th day of September, 2010.



Mayor – Wayne Hurst



Clerk – Brenda M. Percy

The applicant(s) hereby applies to the Land Registrar.

yyyy mm dd

Page 1 of 3

Properties

PIN 01546 - 0933 LT
Description BLOCK 23, PLAN 12M-470, AMHERSTBURG.
Address AMHERSTBURG

Applicant(s)

This Order/By-law affects the selected PINs.

Name THE CORPORATION OF THE TOWN OF AMHERSTBURG
Address for Service 271 Sandwich St.S.
 Amherstburg, Ontario
 N9V 2A5

This document is being authorized by a municipal corporation LORY BRATT, AMCT, PLANNING COORDINATOR.

This document is not authorized under Power of Attorney by this party.

Statements

This application is based on the Municipality By-Law No. 2010-94 dated 2010/09/27.

Schedule: See Schedules

Signed By

Armando Felice Antonio DeLuca	500-251 Goyeau Street Windsor N9A 6V2	acting for Applicant(s)	Signed	2010 10 14
Tel 519-258-0615				
Fax 5192586833				

I have the authority to sign and register the document on behalf of the Applicant(s).

Submitted By

MOUSSEAU DELUCA MCPHERSON PRINCE	500-251 Goyeau Street Windsor N9A 6V2	2010 10 14
Tel 519-258-0615		
Fax 5192586833		

Fees/Taxes/Payment

<i>Statutory Registration Fee</i>	\$60.00
<i>Total Paid</i>	\$60.00

File Number*Applicant Client File Number :* 24845

L.R.V.

37T-00004

SUBJECT TO AGREEMENT AS IN INSTRUMENT R182121

This final plan of subdivision is approved under ss. 51 (58) of the Planning Act on this 15th day of JULY, 2002.

Bruce Austin
Manager,
Community Planning and Development
Ministry of Municipal Affairs and Housing

PLAN 12M-470

I CERTIFY THAT THIS PLAN IS REGISTERED IN THE LAND REGISTRY OFFICE FOR THE LAND TITLES DIVISION OF ESSEX (12) AT 11:22 O'CLOCK ON THE 15 DAY OF August 2002 AND ENTERED IN P.I.N. 01546-0911 to 0935 AND REQUIRED CONSENTS AND AFFIDAVITS ARE REGISTERED AS PLAN DOCUMENT NO. L1362927

Robert Barishello
ASSISTANT DEPUTY LAND REGISTRAR

THIS PLAN COMPRISES PART OF THE LANDS DESCRIBED BY P.A.N. 01546-0258

PLAN OF SUBDIVISION

OF PART OF LOT 23 CONCESSION 1 GEOGRAPHIC TOWNSHIP OF ANDERDON, NOW IN THE TOWN OF AMHERSTBURG COUNTY OF ESSEX, ONTARIO CLARKE SURVEYORS INCORPORATED - 2002 SCALE: 1:750 METRIC

1:0 20 40 60 80 100 METRES

"METRIC" DISTANCES SHOWN ON THIS PLAN ARE IN METRES AND CAN BE CONVERTED TO FEET BY DIVIDING BY 0.3048

SURVEYOR'S CERTIFICATE

I CERTIFY THAT THIS PLAN AND PLAN ARE CORRECT AND IN ACCORDANCE WITH THE SURVEY ACT, THE PLANNING ACT AND THE LAND TITLES ACT AND THE REGULATIONS MADE THEREUNDER.

July 24/02

BC
BRUCE COOD
CERTIFIED LAND SURVEYOR
1st CLASSE SURVEYORS INCORPORATED

OWNER'S CERTIFICATE

I HAVE READ AND UNDERSTAND THE CONTENTS OF THIS PLAN AND I AGREE TO THE SUBDIVISION OF THE LAND DESCRIBED HEREIN.

DATED THE 23rd DAY OF JULY, 2002

Wayne Hurst

Anthony Joseph Stefanovich
Anthony Joseph Stefanovich

BEARING REFERENCE

BEARINGS ARE ASTROMONIC AND ARE REFERRED TO THE EASTERN LAST OF ESSEX COUNTY ROAD No 20 (FRONT ROAD, THE KING'S HIGHWAY No 18), SHOWN AS 12R-19443 ON PLAN 12R-19443

NOTES

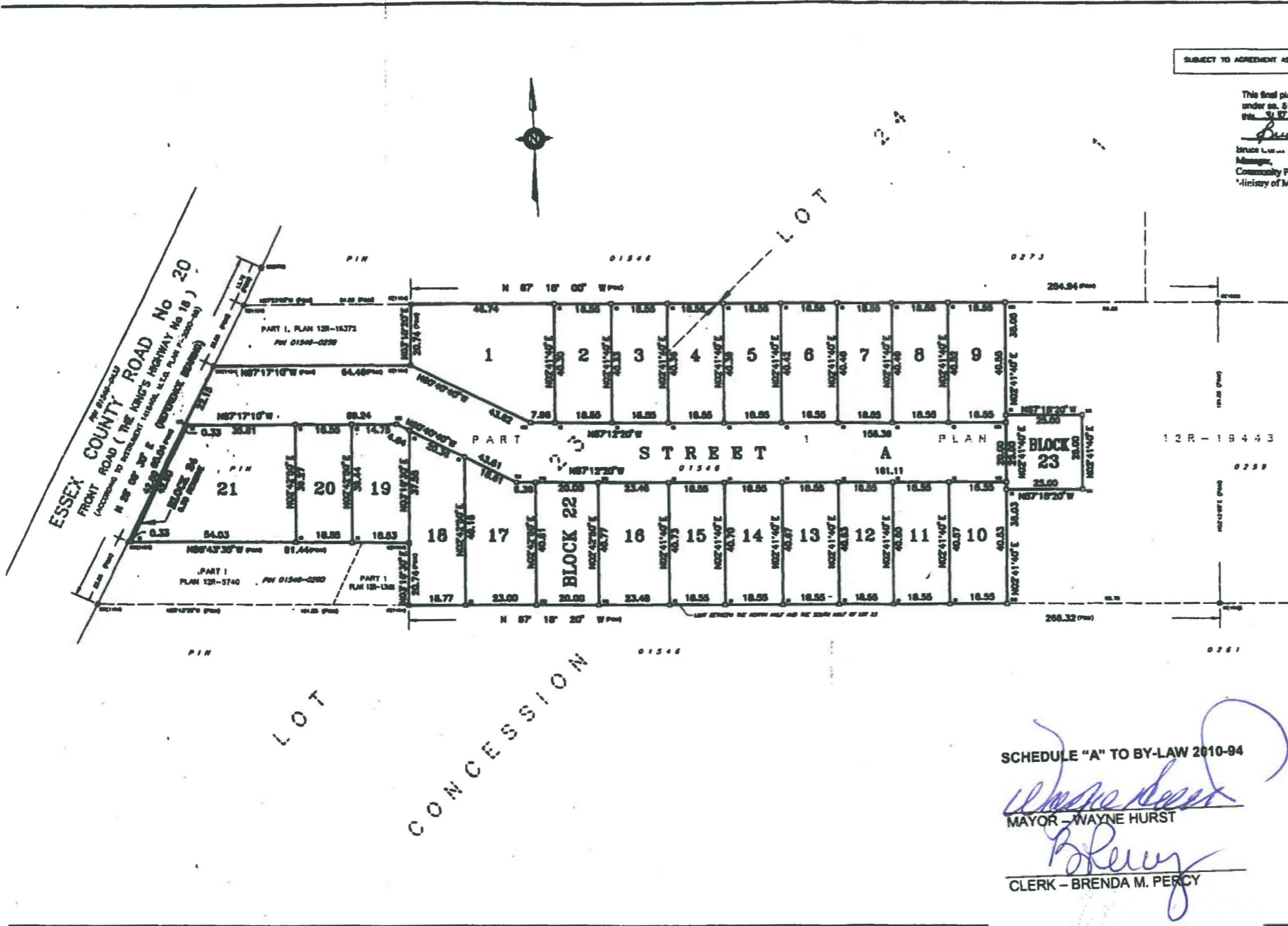
- 1. RECORDS SURVEY MONUMENT FOUND
- 2. RECORDS SURVEY MONUMENT SET AND MONUMENT 1201
- 3. RECORDS STRONGEST CORNER SET
- 4. RECORDS STRONGEST CORNER SET AND STRONGEST CORNER SET
- 5. RECORDS STRONG CORNER SET
- 6. RECORDS STRONG CORNER SET
- 7. RECORDS STRONG CORNER SET
- 8. RECORDS STRONG CORNER SET
- 9. RECORDS STRONG CORNER SET
- 10. RECORDS STRONG CORNER SET
- 11. RECORDS STRONG CORNER SET
- 12. RECORDS STRONG CORNER SET
- 13. RECORDS STRONG CORNER SET
- 14. RECORDS STRONG CORNER SET
- 15. RECORDS STRONG CORNER SET
- 16. RECORDS STRONG CORNER SET
- 17. RECORDS STRONG CORNER SET
- 18. RECORDS STRONG CORNER SET
- 19. RECORDS STRONG CORNER SET
- 20. RECORDS STRONG CORNER SET
- 21. RECORDS STRONG CORNER SET
- 22. RECORDS STRONG CORNER SET
- 23. RECORDS STRONG CORNER SET
- 24. RECORDS STRONG CORNER SET
- 25. RECORDS STRONG CORNER SET
- 26. RECORDS STRONG CORNER SET
- 27. RECORDS STRONG CORNER SET
- 28. RECORDS STRONG CORNER SET
- 29. RECORDS STRONG CORNER SET
- 30. RECORDS STRONG CORNER SET
- 31. RECORDS STRONG CORNER SET
- 32. RECORDS STRONG CORNER SET
- 33. RECORDS STRONG CORNER SET
- 34. RECORDS STRONG CORNER SET
- 35. RECORDS STRONG CORNER SET
- 36. RECORDS STRONG CORNER SET
- 37. RECORDS STRONG CORNER SET
- 38. RECORDS STRONG CORNER SET
- 39. RECORDS STRONG CORNER SET
- 40. RECORDS STRONG CORNER SET
- 41. RECORDS STRONG CORNER SET
- 42. RECORDS STRONG CORNER SET
- 43. RECORDS STRONG CORNER SET
- 44. RECORDS STRONG CORNER SET
- 45. RECORDS STRONG CORNER SET
- 46. RECORDS STRONG CORNER SET
- 47. RECORDS STRONG CORNER SET
- 48. RECORDS STRONG CORNER SET
- 49. RECORDS STRONG CORNER SET
- 50. RECORDS STRONG CORNER SET
- 51. RECORDS STRONG CORNER SET
- 52. RECORDS STRONG CORNER SET
- 53. RECORDS STRONG CORNER SET
- 54. RECORDS STRONG CORNER SET
- 55. RECORDS STRONG CORNER SET
- 56. RECORDS STRONG CORNER SET
- 57. RECORDS STRONG CORNER SET
- 58. RECORDS STRONG CORNER SET
- 59. RECORDS STRONG CORNER SET
- 60. RECORDS STRONG CORNER SET
- 61. RECORDS STRONG CORNER SET
- 62. RECORDS STRONG CORNER SET
- 63. RECORDS STRONG CORNER SET
- 64. RECORDS STRONG CORNER SET
- 65. RECORDS STRONG CORNER SET
- 66. RECORDS STRONG CORNER SET
- 67. RECORDS STRONG CORNER SET
- 68. RECORDS STRONG CORNER SET
- 69. RECORDS STRONG CORNER SET
- 70. RECORDS STRONG CORNER SET
- 71. RECORDS STRONG CORNER SET
- 72. RECORDS STRONG CORNER SET
- 73. RECORDS STRONG CORNER SET
- 74. RECORDS STRONG CORNER SET
- 75. RECORDS STRONG CORNER SET
- 76. RECORDS STRONG CORNER SET
- 77. RECORDS STRONG CORNER SET
- 78. RECORDS STRONG CORNER SET
- 79. RECORDS STRONG CORNER SET
- 80. RECORDS STRONG CORNER SET
- 81. RECORDS STRONG CORNER SET
- 82. RECORDS STRONG CORNER SET
- 83. RECORDS STRONG CORNER SET
- 84. RECORDS STRONG CORNER SET
- 85. RECORDS STRONG CORNER SET
- 86. RECORDS STRONG CORNER SET
- 87. RECORDS STRONG CORNER SET
- 88. RECORDS STRONG CORNER SET
- 89. RECORDS STRONG CORNER SET
- 90. RECORDS STRONG CORNER SET
- 91. RECORDS STRONG CORNER SET
- 92. RECORDS STRONG CORNER SET
- 93. RECORDS STRONG CORNER SET
- 94. RECORDS STRONG CORNER SET
- 95. RECORDS STRONG CORNER SET
- 96. RECORDS STRONG CORNER SET
- 97. RECORDS STRONG CORNER SET
- 98. RECORDS STRONG CORNER SET
- 99. RECORDS STRONG CORNER SET
- 100. RECORDS STRONG CORNER SET

CGO REG. 22/01/2002 220PM 2ND FLE. 01/18/02/01/2273-0200

CLARKE SURVEYORS INCORPORATED
Ontario Land Surveyors
Consulting Surveyors

Alan A. Clarke, O.L.S.
Brian Cood, O.L.S.
640 Victoria Avenue
Windsor, Ontario
N9A 4H2
Ph: (519) 256-4166
Fax: (519) 256-3674
www.clarke-surveyors.com

REGISTRY OF LANDS
C.M.A.L./R.
REGISTRY OF LANDS
32873-01
L-402-1-53
11-316



SCHEDULE "A" TO BY-LAW 2010-94

Wayne Hurst
MAYOR - WAYNE HURST

Brenda M. Percy
CLERK - BRENDA M. PERCY