

THE CORPORATION OF THE TOWN OF AMHERSTBURG

BY-LAW NO. 2007-84

**A by-law to dedicate certain lands in the Town
of Amherstburg as public highways**

WHEREAS the Municipal Act, R.S.O. 2001, c.25, Section 6 authorizes the Council of every Corporation to pass a by-law for acquiring any land required for the purposes of the Corporation;

AND WHEREAS the Municipal Act, R.S.O. 2001, c.25 Sections 24-68 authorizes the Council of every municipality to pass a by-law for establishing, laying out, acquiring, assuming, or naming a highway;

AND WHEREAS the Council of the Town of Amherstburg did pass By-law 2004-86 authorizing the execution of a Subdivision Agreement (Kingsbridge Subdivision-Whelan, Hilton and Wilson);

AND WHEREAS the Council of the Town of Amherstburg has agreed to facilitate the reconfiguration of lots of said subdivision;

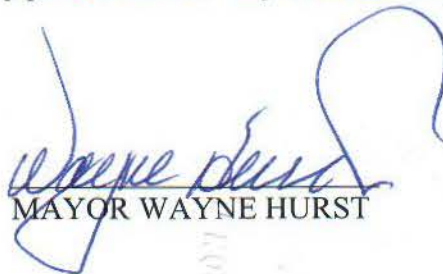
AND WHEREAS land being transferred to the Town for the continuation of Hilton Court is described as follows:

Plan 12R23190 Part 27 Area 1557.5 sq m

**NOW THEREFORE THE COUNCIL OF THE CORPORATION OF THE TOWN
OF AMHERSTBURG HEREBY ENACTS AS FOLLOWS:**

1. That the lands described as Plan 12R23190 Part 27 with an area of 1557.5 sq metres and shown on Plan 12R-23190 attached hereto, in the Town of Amherstburg, County of Essex, Province of Ontario are hereby established as public roadway and will be assumed subsequently in accordance with the development agreement.

Read a first, second and third time and finally passed this 20th day of December, 2007.


MAYOR WAYNE HURST


CLERK PAMELA MALOTT

PLAN 12R-23190
 I HEREBY HEREBY TO BE
 RECORDED UNDER THE
 LAND TILES ACT.
 DATE SEPTEMBER 18, 2007
 DATE SEPTEMBER 20, 2007
 AN ASSISTANT COUNTY LAND
 SURVEYOR FOR THE LAND TILES
 DIVISION OF ESSEX (12)

PART	AREA (m ²)	DESCRIPTION	PLAN
1	983.8	PART OF LOTS 47 AND 48, PLAN 12M-534	
2	993.7	PART OF LOTS 33 AND 34, PLAN 12M-534	
3	895.0	PART OF LOTS 31 AND 32, PLAN 12M-534	
4	911.4	PART OF LOTS 29 AND 30, PLAN 12M-534	
5	900.3	LOT 28 & PART OF LOT 30, PLAN 12M-534	
6	993.9	PART OF LOTS 14, 15, 16 AND 17, PLAN 12M-534	
7	907.7	PART OF LOTS 34 AND 35, PLAN 12M-534	

PART	AREA (m ²)	DESCRIPTION	PLAN
8	988.4	PART OF LOTS 33 AND 34, PLAN 12M-534	
9	983.8	PART OF LOTS 31 AND 32, PLAN 12M-534	
10	993.7	PART OF LOTS 29 AND 30, PLAN 12M-534	
11	911.4	PART OF LOTS 27 AND 28, PLAN 12M-534	
12	900.3	LOT 26 & PART OF LOT 28, PLAN 12M-534	
13	993.9	PART OF LOTS 14, 15, 16 AND 17, PLAN 12M-534	
14	907.7	PART OF LOTS 34 AND 35, PLAN 12M-534	

PART	AREA (m ²)	DESCRIPTION	PLAN
15	788.4	PART OF LOTS 36, 37 AND 40, PLAN 12M-534	
16	788.0	PART OF HILTON COURT, PLAN 12M-534	
17	788.0	PART OF LOTS 41 AND 42, PLAN 12M-534	
18	788.4	PART OF LOTS 43, 44 AND 45, PLAN 12M-534	
19	803.4	PART OF LOTS 46 AND 47, PLAN 12M-534	
20	1133.0	PART OF LOTS 48, 49 AND 50, PLAN 12M-534	
21	1360.1	PART OF LOTS 51, 52 AND 53, PLAN 12M-534	
22	1360.1	PART OF HILTON COURT, PLAN 12M-534	
23	1360.1	PART OF LOTS 54, 55 AND 56, PLAN 12M-534	

PART	AREA (m ²)	DESCRIPTION	PLAN
24	1172.0	PART OF LOTS 41 AND 42, PLAN 12M-534	
25	1172.0	PART OF LOTS 36, 37 AND 40, PLAN 12M-534	
26	910.0	PART OF LOTS 41 AND 42, PLAN 12M-534	
27	1,557.5	PART OF LOTS 43, 44 AND 45, PLAN 12M-534	
28	3,288.1	PART OF LOTS 46 AND 47, PLAN 12M-534	
29	3,288.1	PART OF HILTON COURT, PLAN 12M-534	

BEARING REFERENCE
 MICHIGAN, ETC. ESTABLISHED AND ARE REFERRED TO THE EXTENSION LINE OF
 PLAN 12M-287 AND HAVING A BEARING OF S 82° 41' 30" E.

PLAN OF SURVEY
 OF
 LOTS 29 to 48, (Incl.)
 PART OF HILTON COURT,
 PART OF WILSON COURT,
 PLAN 12M-534
 IN THE
 TOWN OF AMHERSTBURG
 COUNTY OF ESSEX, ONTARIO
 VERONIKEN - STUBBSFIELD - HARTLEY - BROWN - BEZARE INC.
 SCALE 1:1000

"METRIC" DIMENSIONS SHOWN ON THIS PLAN ARE IN METRES AND
 CAN BE CONVERTED TO FEET BY DIVIDING BY 3.048

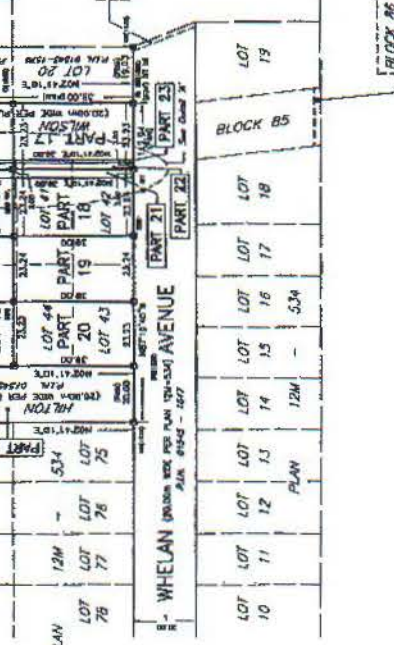
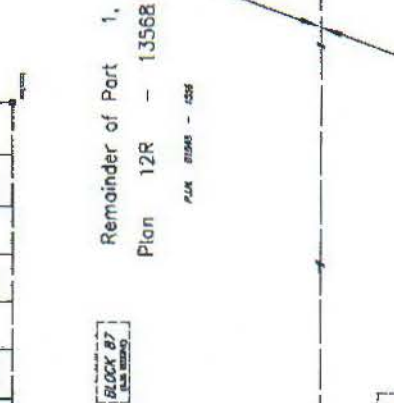
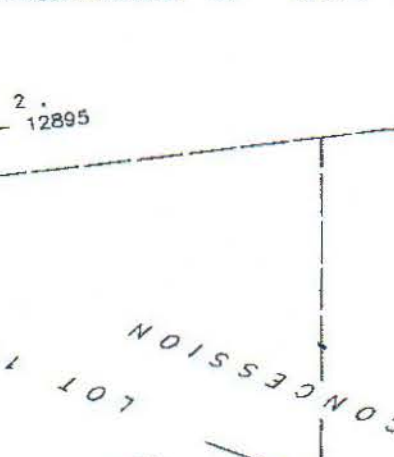
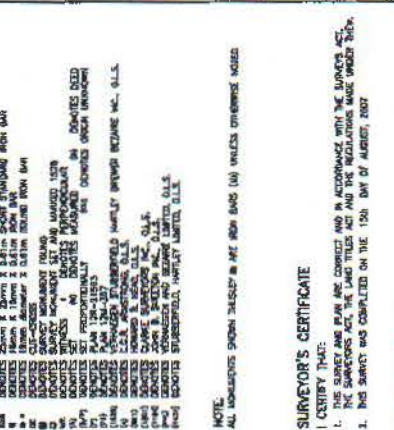
LEGEND
 1. 1.20m STAINLESS IRON BAR
 2. 1.20m STAINLESS IRON BAR
 3. 1.20m STAINLESS IRON BAR
 4. 1.20m STAINLESS IRON BAR
 5. 1.20m STAINLESS IRON BAR
 6. 1.20m STAINLESS IRON BAR
 7. 1.20m STAINLESS IRON BAR
 8. 1.20m STAINLESS IRON BAR
 9. 1.20m STAINLESS IRON BAR
 10. 1.20m STAINLESS IRON BAR
 11. 1.20m STAINLESS IRON BAR
 12. 1.20m STAINLESS IRON BAR
 13. 1.20m STAINLESS IRON BAR
 14. 1.20m STAINLESS IRON BAR
 15. 1.20m STAINLESS IRON BAR
 16. 1.20m STAINLESS IRON BAR
 17. 1.20m STAINLESS IRON BAR
 18. 1.20m STAINLESS IRON BAR
 19. 1.20m STAINLESS IRON BAR
 20. 1.20m STAINLESS IRON BAR
 21. 1.20m STAINLESS IRON BAR
 22. 1.20m STAINLESS IRON BAR
 23. 1.20m STAINLESS IRON BAR
 24. 1.20m STAINLESS IRON BAR
 25. 1.20m STAINLESS IRON BAR
 26. 1.20m STAINLESS IRON BAR
 27. 1.20m STAINLESS IRON BAR
 28. 1.20m STAINLESS IRON BAR
 29. 1.20m STAINLESS IRON BAR
 30. 1.20m STAINLESS IRON BAR
 31. 1.20m STAINLESS IRON BAR
 32. 1.20m STAINLESS IRON BAR
 33. 1.20m STAINLESS IRON BAR
 34. 1.20m STAINLESS IRON BAR
 35. 1.20m STAINLESS IRON BAR
 36. 1.20m STAINLESS IRON BAR
 37. 1.20m STAINLESS IRON BAR
 38. 1.20m STAINLESS IRON BAR
 39. 1.20m STAINLESS IRON BAR
 40. 1.20m STAINLESS IRON BAR
 41. 1.20m STAINLESS IRON BAR
 42. 1.20m STAINLESS IRON BAR
 43. 1.20m STAINLESS IRON BAR
 44. 1.20m STAINLESS IRON BAR
 45. 1.20m STAINLESS IRON BAR
 46. 1.20m STAINLESS IRON BAR
 47. 1.20m STAINLESS IRON BAR
 48. 1.20m STAINLESS IRON BAR
 49. 1.20m STAINLESS IRON BAR
 50. 1.20m STAINLESS IRON BAR
 51. 1.20m STAINLESS IRON BAR
 52. 1.20m STAINLESS IRON BAR
 53. 1.20m STAINLESS IRON BAR
 54. 1.20m STAINLESS IRON BAR
 55. 1.20m STAINLESS IRON BAR
 56. 1.20m STAINLESS IRON BAR
 57. 1.20m STAINLESS IRON BAR
 58. 1.20m STAINLESS IRON BAR
 59. 1.20m STAINLESS IRON BAR
 60. 1.20m STAINLESS IRON BAR
 61. 1.20m STAINLESS IRON BAR
 62. 1.20m STAINLESS IRON BAR
 63. 1.20m STAINLESS IRON BAR
 64. 1.20m STAINLESS IRON BAR
 65. 1.20m STAINLESS IRON BAR
 66. 1.20m STAINLESS IRON BAR
 67. 1.20m STAINLESS IRON BAR
 68. 1.20m STAINLESS IRON BAR
 69. 1.20m STAINLESS IRON BAR
 70. 1.20m STAINLESS IRON BAR
 71. 1.20m STAINLESS IRON BAR
 72. 1.20m STAINLESS IRON BAR
 73. 1.20m STAINLESS IRON BAR
 74. 1.20m STAINLESS IRON BAR
 75. 1.20m STAINLESS IRON BAR
 76. 1.20m STAINLESS IRON BAR
 77. 1.20m STAINLESS IRON BAR
 78. 1.20m STAINLESS IRON BAR
 79. 1.20m STAINLESS IRON BAR
 80. 1.20m STAINLESS IRON BAR
 81. 1.20m STAINLESS IRON BAR
 82. 1.20m STAINLESS IRON BAR
 83. 1.20m STAINLESS IRON BAR
 84. 1.20m STAINLESS IRON BAR
 85. 1.20m STAINLESS IRON BAR
 86. 1.20m STAINLESS IRON BAR
 87. 1.20m STAINLESS IRON BAR
 88. 1.20m STAINLESS IRON BAR
 89. 1.20m STAINLESS IRON BAR
 90. 1.20m STAINLESS IRON BAR
 91. 1.20m STAINLESS IRON BAR
 92. 1.20m STAINLESS IRON BAR
 93. 1.20m STAINLESS IRON BAR
 94. 1.20m STAINLESS IRON BAR
 95. 1.20m STAINLESS IRON BAR
 96. 1.20m STAINLESS IRON BAR
 97. 1.20m STAINLESS IRON BAR
 98. 1.20m STAINLESS IRON BAR
 99. 1.20m STAINLESS IRON BAR
 100. 1.20m STAINLESS IRON BAR

NOTE
 ALL DIMENSIONS SHOWN THEREON ARE IN METRES (M) UNLESS OTHERWISE NOTED

SURVEYOR'S CERTIFICATE
 I CERTIFY THAT:
 1. THE SURVEY WAS MADE AND CORRECTED WITH MEASUREMENTS WITH THE SURVEYOR'S
 2. THE SURVEY WAS MADE AND CORRECTED WITH MEASUREMENTS WITH THE SURVEYOR'S
 3. THE SURVEY WAS COMPLETED ON THE 15th DAY OF AUGUST, 2007

DATE SEPTEMBER 18, 2007
 ANDREW S. MATHIA
 OFTALD LAND SURVEYOR
 10 VERONIKEN - STUBBSFIELD - HARTLEY -
 BROWN - BEZARE INC.

WILSON COURT
 HILTON COURT
 WHELAN AVENUE
 CONFESSION



Part 4, Plan 12R - 8645
 Part 1, Plan 12R - 11880
 Part 1, Plan 12R - 13588
 Part 1, Plan 12R - 14132

WILSON COURT
 HILTON COURT
 WHELAN AVENUE
 CONFESSION

LOT 19
 LOT 18
 LOT 17
 LOT 16
 LOT 15
 LOT 14
 LOT 13
 LOT 12
 LOT 11
 LOT 10

LOT 9
 LOT 8
 LOT 7
 LOT 6
 LOT 5
 LOT 4
 LOT 3
 LOT 2
 LOT 1

CURVE	RADIUS	ARC	CHORD	CHORD BEARING
C1	15.24	22.84	21.56	107° 12' 30"
C2	15.24	22.84	21.56	107° 12' 30"

WILSON COURT
 HILTON COURT
 WHELAN AVENUE
 CONFESSION

LOT 19
 LOT 18
 LOT 17
 LOT 16
 LOT 15
 LOT 14
 LOT 13
 LOT 12
 LOT 11
 LOT 10