

**CORPORATION OF THE TOWN OF AMHERSTBURG
BY-LAW NO. 2007-82**

**Being a Bylaw to close a portion of Wilson Court
and convey these lands to the Developer**

WHEREAS it is deemed expedient to close up parts of Wilson Court described as follows:

Legal Description **Plan 12R23190 Parts 16, 17, 22, 23, 25 and 26** **Area 1812 sq m**

AND WHEREAS the Council of the Town of Amherstburg has deemed it appropriate and expedient to convey the said lands to the Developer to facilitate further development;

AND WHEREAS pursuant to Section 34 of the Municipal Act 2001 s.o. 2001 c.25 before passing a bylaw for permanently closing a highway, a municipality shall give public notice of its intention to pass the bylaw;

AND WHEREAS Notice of the Intention of the Council of the Town of Amherstburg was published in the Amherstburg Echo as follows:

October 17th, 2007
October 24th, 2007
October 31st, 2007

AND WHEREAS Council adopted a report prepared by Lory Bratt, Planning Coordinator and Pamela Malott, Manager of Corporate and Legislative Services at the Council Meeting of August 27th, 2007 which recommended the said road closure and land conveyances take place;

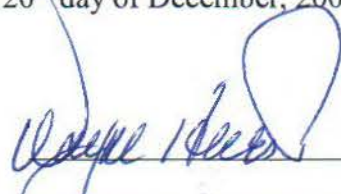
**NOW THEREFORE THE COUNCIL OF THE CORPORATION OF
THE TOWN OF AMHERSTBURG HEREBY ENACTS AS FOLLOWS:**

1. That the following parts of Wilson Court as shown on Plan 12R-23190 attached to this by-law, shall be closed and conveyed to the Developer 1078217 Ontario Limited:

Plan 12R23190 Parts 16, 17, 22, 23, 25 and 26 **Area 1812 sq m**

2. That this bylaw shall come into force and take effect after the final passing thereof on the day upon which it is registered in the Registry Office for the Registry Division of Essex (No. 12).
3. That the Mayor and the Clerk of the Corporation be and are hereby authorized to do all acts and sign all documents which will be necessary to close the said parts of the road and convey the said lands as provided herein, and to otherwise carry out the intent of this bylaw.

Read a first, second and third time and finally passed this 20th day of December, 2007.



MAYOR WAYNE HURST



CLERK PAMELA MALOTT

1. REQUIRE THIS PLAN TO BE RECEIVED AND APPROVED
DATE SEPTEMBER 18, 2007
DATE SEPTEMBER 25, 2007

APPROVED BY THE SURVEYOR
AND APPROVED BY THE DIVISION OF TAXES (17)

PART	AREA (sq ft)	PLAN	DESCRIPTION
1	903.8		PART OF LOTS 47 and 48, PLAN 12M-534
2	907.7		PART OF LOTS 37, 38, 47 and 48, PLAN 12M-534
3	902.8		PART OF LOTS 31 and 32, PLAN 12M-534
4	903.4		PART OF LOTS 29 and 30, PLAN 12M-534
5	903.2		PART OF LOTS 27 and 28, PLAN 12M-534
6	903.9		PART OF LOTS 25 and 26, PLAN 12M-534
7	907.7		PART OF LOTS 23 and 24, PLAN 12M-534

PART	AREA (sq ft)	PLAN	DESCRIPTION
8	903.4		PART OF LOTS 21 and 22, PLAN 12M-534
9	903.2		PART OF LOTS 19 and 20, PLAN 12M-534
10	903.4		PART OF LOTS 17 and 18, PLAN 12M-534
11	903.9		PART OF LOTS 15 and 16, PLAN 12M-534
12	903.2		PART OF LOTS 13 and 14, PLAN 12M-534
13	903.4		PART OF LOTS 11 and 12, PLAN 12M-534
14	903.4		PART OF LOTS 9 and 10, PLAN 12M-534

PART	AREA (sq ft)	PLAN	DESCRIPTION
15	793.4		PART OF LOTS 38, 39 and 40, PLAN 12M-534
16	793.0		PART OF WILSON COURT, PLAN 12M-534
17	793.0		PART OF WILSON COURT, PLAN 12M-534
18	793.4		PART OF LOTS 42, 41 and 42, PLAN 12M-534
19	803.4		PART OF LOTS 40, 39 and 40, PLAN 12M-534
20	803.4		PART OF LOTS 38, 39 and 40, PLAN 12M-534
21	1112.0		PART OF LOTS 42, 41 and 42, PLAN 12M-534
22	1112.0		PART OF LOTS 40, 39 and 40, PLAN 12M-534

PART	AREA (sq ft)	PLAN	DESCRIPTION
23	1112.0		PART OF LOTS 38, 39 and 40, PLAN 12M-534
24	1112.0		PART OF LOTS 36, 37 and 38, PLAN 12M-534
25	1112.0		PART OF LOTS 34, 35 and 36, PLAN 12M-534
26	1112.0		PART OF LOTS 32, 33 and 34, PLAN 12M-534
27	1112.0		PART OF LOTS 30, 31 and 32, PLAN 12M-534
28	1112.0		PART OF LOTS 28, 29 and 30, PLAN 12M-534

PART	AREA (sq ft)	PLAN	DESCRIPTION
29	1112.0		PART OF LOTS 26, 27 and 28, PLAN 12M-534
30	1112.0		PART OF LOTS 24, 25 and 26, PLAN 12M-534
31	1112.0		PART OF LOTS 22, 23 and 24, PLAN 12M-534
32	1112.0		PART OF LOTS 20, 21 and 22, PLAN 12M-534
33	1112.0		PART OF LOTS 18, 19 and 20, PLAN 12M-534
34	1112.0		PART OF LOTS 16, 17 and 18, PLAN 12M-534

PLAN OF SURVEY
OF
LOTS 29 to 48, (Incl.)
PART OF HILTON COURT,
PART OF WILSON COURT,
PLAN 12M-534
IN THE
TOWN OF AMHERSTBURG
COUNTY OF ESSEX, ONTARIO
VENNESEN • STUBBSFIELD • HARTLEY • INCHER • BEZARE INC.
SCALE = 1:1000

"METRIC" DIMENSIONS SHOWN ON THIS PLAN ARE IN METERS AND
CENTIMETERS TO BE CONVERTED TO FEET BY DIVIDING BY 3.048

- LEGEND**
- 1. LOT 1 TO 12: 1/2" THICKNESS BOUNDARY
 - 2. LOT 13 TO 28: 1/4" THICKNESS BOUNDARY
 - 3. LOT 29 TO 48: 1/8" THICKNESS BOUNDARY
 - 4. WILSON COURT: 1/4" THICKNESS BOUNDARY
 - 5. HILTON COURT: 1/4" THICKNESS BOUNDARY
 - 6. WHEELAN AVENUE: 1/4" THICKNESS BOUNDARY
 - 7. CONCESSION LINES: 1/8" THICKNESS BOUNDARY
 - 8. BLOCK 85: 1/4" THICKNESS BOUNDARY
 - 9. BLOCK 86: 1/4" THICKNESS BOUNDARY
 - 10. BLOCK 87: 1/4" THICKNESS BOUNDARY
 - 11. BLOCK 88: 1/4" THICKNESS BOUNDARY
 - 12. BLOCK 89: 1/4" THICKNESS BOUNDARY
 - 13. BLOCK 90: 1/4" THICKNESS BOUNDARY
 - 14. BLOCK 91: 1/4" THICKNESS BOUNDARY
 - 15. BLOCK 92: 1/4" THICKNESS BOUNDARY
 - 16. BLOCK 93: 1/4" THICKNESS BOUNDARY
 - 17. BLOCK 94: 1/4" THICKNESS BOUNDARY
 - 18. BLOCK 95: 1/4" THICKNESS BOUNDARY
 - 19. BLOCK 96: 1/4" THICKNESS BOUNDARY
 - 20. BLOCK 97: 1/4" THICKNESS BOUNDARY
 - 21. BLOCK 98: 1/4" THICKNESS BOUNDARY
 - 22. BLOCK 99: 1/4" THICKNESS BOUNDARY
 - 23. BLOCK 100: 1/4" THICKNESS BOUNDARY

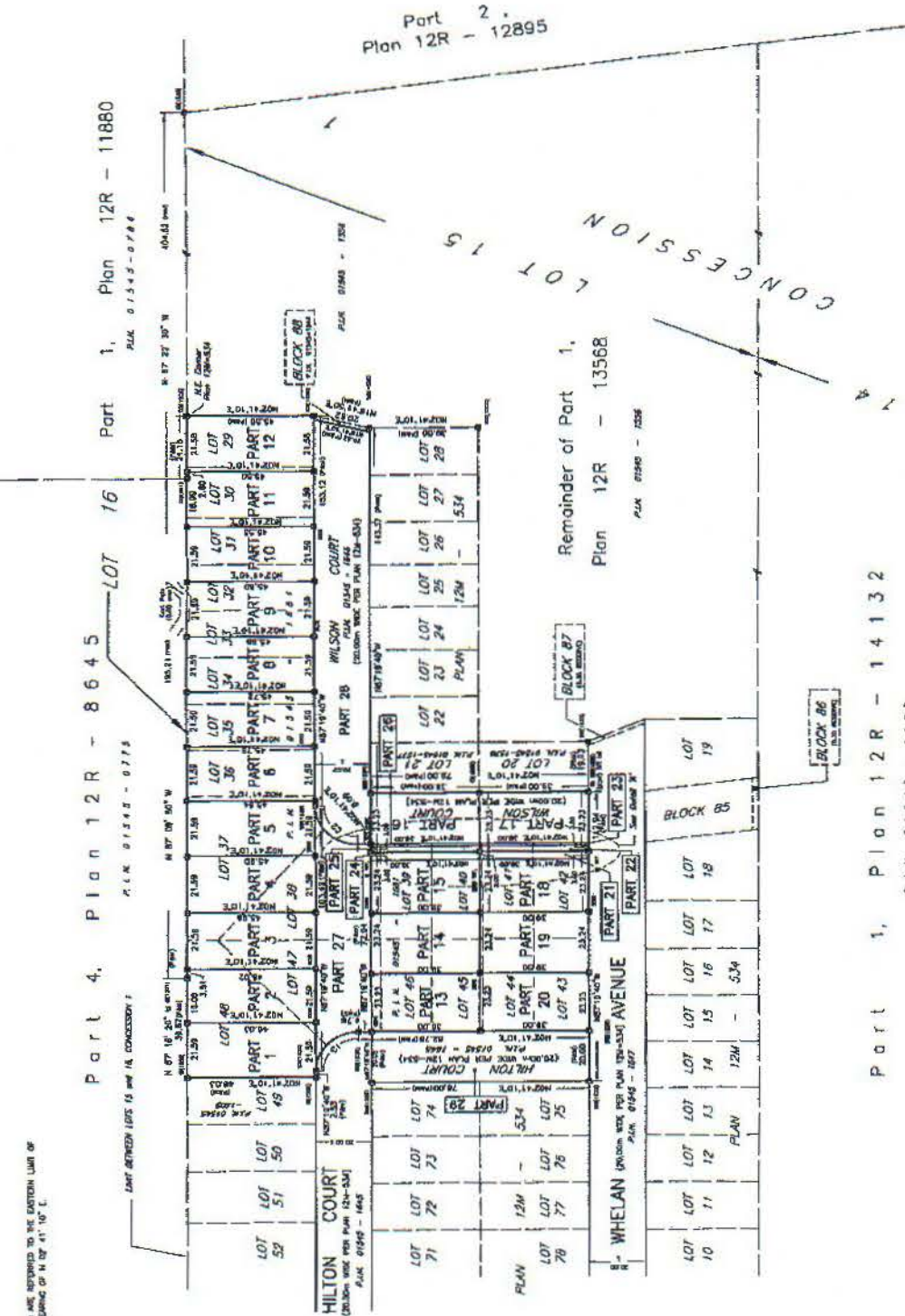
NOTE
ALL DIMENSIONS SHOWN UNLESS OTHERWISE NOTED

SURVEYOR'S CERTIFICATE

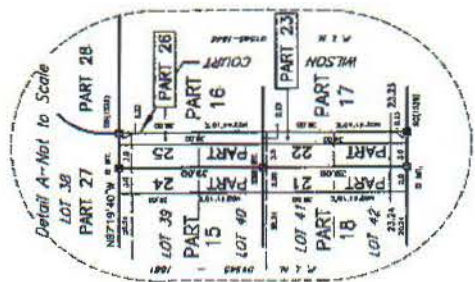
I CERTIFY THAT:
1. THE SURVEY AND PLAN ARE ACCORDANCE WITH THE SURVEY ACT,
THE SURVEYORS ACT, THE LAND TITLES ACT AND THE REGULATIONS MADE THEREBY;
2. THE SURVEY WAS COMPLETED ON THE 15th DAY OF AUGUST, 2007

DATE SEPTEMBER 18, 2007

VENNESEN • STUBBSFIELD • HARTLEY • INCHER • BEZARE INC.
147 BROADVIEW AVE. UNIT 200
LEAMINGTON ONTARIO N0W 1Y2
TEL: 519-323-1212
FAX: 519-323-1213
WWW.VENNESEN.COM



BEARING REFERENCE
BEARINGS ARE ASTROMETRIC AND ARE REFERRED TO THE EASTERN LIMIT OF
PLAN 12M-534 AND HAVING A BEARING OF N 0° 41' 10" E.



CURVE SCHEDULE

CURVE	RADIUS	ARC	CHORD	CHORD BEARING
CT	18.24	23.14	21.54	86° 17' 30"

P.E.N. 01346 - 1107