

CORPORATION OF THE TOWN OF AMHERSTBURG

BYLAW NO. 2006-76

**Being a bylaw to authorize the sale of a small
Parcel of land to Mikhail Holdings**

WHEREAS the Council of the Town of Amherstburg has deemed it appropriate and expedient to sell a small parcel of surplus land adjacent to the White Woods Mall property to Mikhail Holdings to facilitate economic development, and

WHEREAS Council of the Town of Amherstburg at the regular meeting held on September 11, 2006 has declared the said property as surplus and that the property be sold to Mikhail Holdings, and

WHEREAS previously sold lands in the immediate area were appraised and sold at \$4.73 per square foot, and

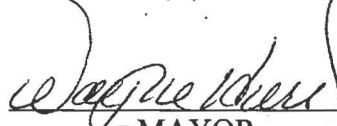
WHEREAS the value of the parcel to be now sold based on \$4.73 per square foot would be \$2366.00, and

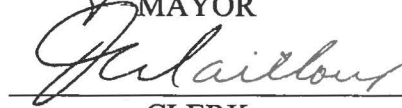
WHEREAS the notice of the proposed sale was published during the week of October 3rd in the Amherstburg Echo and the River Town Times;

**NOW THEREFORE THE COUNCIL OF THE CORPORATION
OF THE TOWN OF AMHERSTBURG ENACTS AS FOLLOWS:**

1. That the property shown in Schedule A attached and forming part of this Bylaw as Part 3 on Plan 12R22777 (15.24M X 3.05M) be sold to Mikhail Holdings for \$2,366.00 plus legal and survey costs.
2. That the sale of the lands be subject to the necessary easements, encumbrances and restrictions that the Town requires, including but not necessarily limited to sewers, watermains and utilities.
3. That Administration and the Town Solicitor be authorized to take the necessary steps to complete the transfer of said lands.
4. That the Mayor & Clerk be authorized to sign the original and a copy of the transfer/deed and affix the corporate seal thereto.
5. The bylaw shall come into force and take effect on the date of the final passing thereof.

Read a first, second and third time and finally passed this 10th day of October, 2006.



MAYOR


CLERK

Certified to be a true copy of Bylaw
No. 2006-76 passed by the Council
of the Town of Amherstburg on
October 10, 2006.

David Mailloux, Clerk

PAF

PART	AREA
1	578.9 m ²
2	463.3 m ²

PART 1 COM
PART 2 COM
PARTS 3 AND



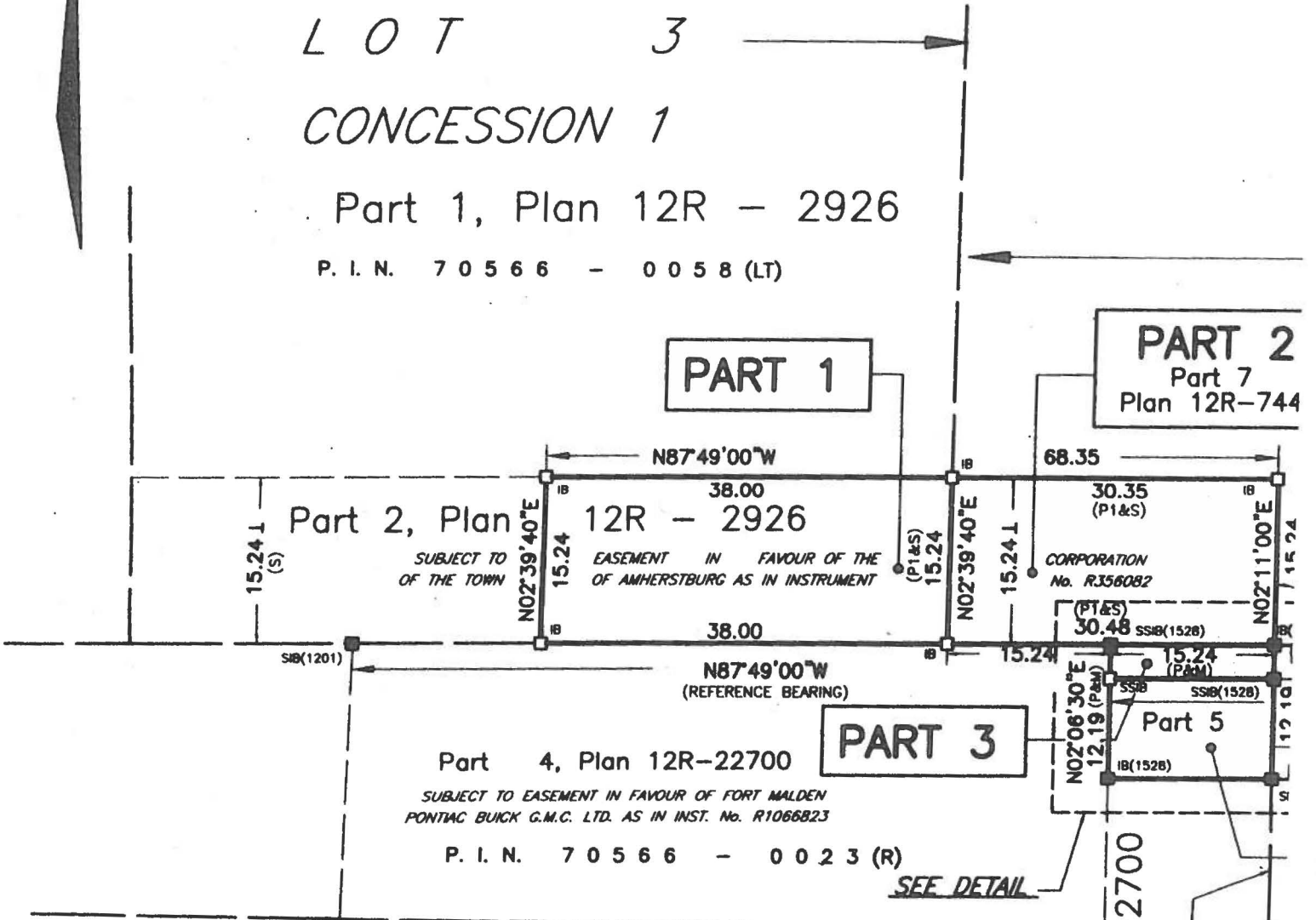
BEARING REFERENCE

BEARINGS ARE ASTRONOMIC AND ARE REFERRED TO THE NORTHERN LIMIT OF LANDS DESIGNATED AS PARTS 1, 4 AND 5 SHOWN ON PLAN 12R-22700 HAVING A BEARING OF N 87° 49' 00" W.

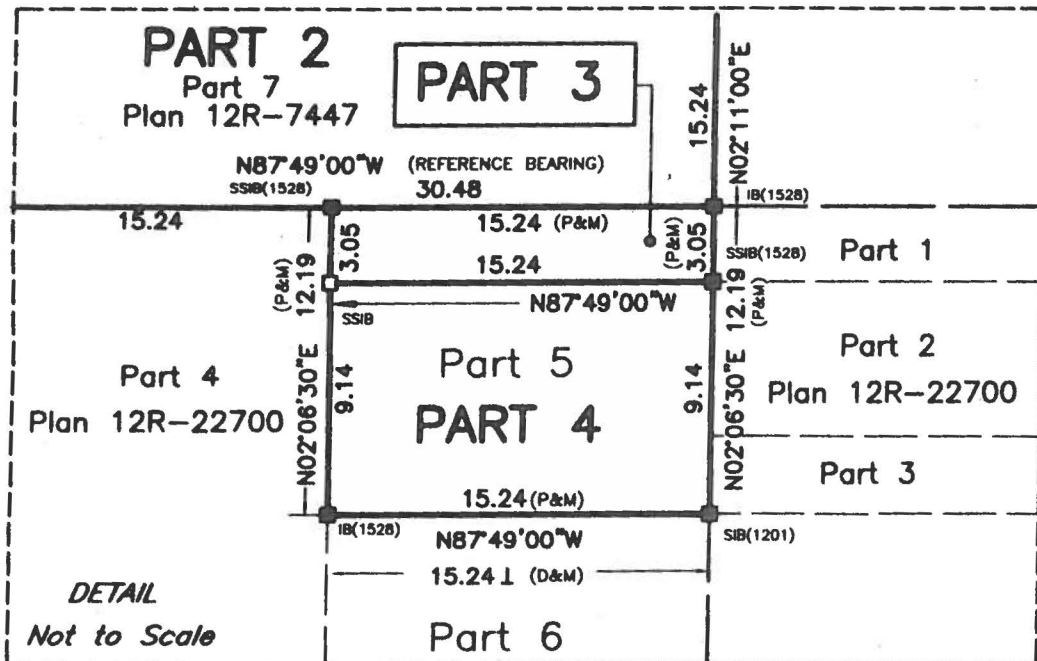
LOT 3
CONCESSION 1

Part 1, Plan 12R - 2926

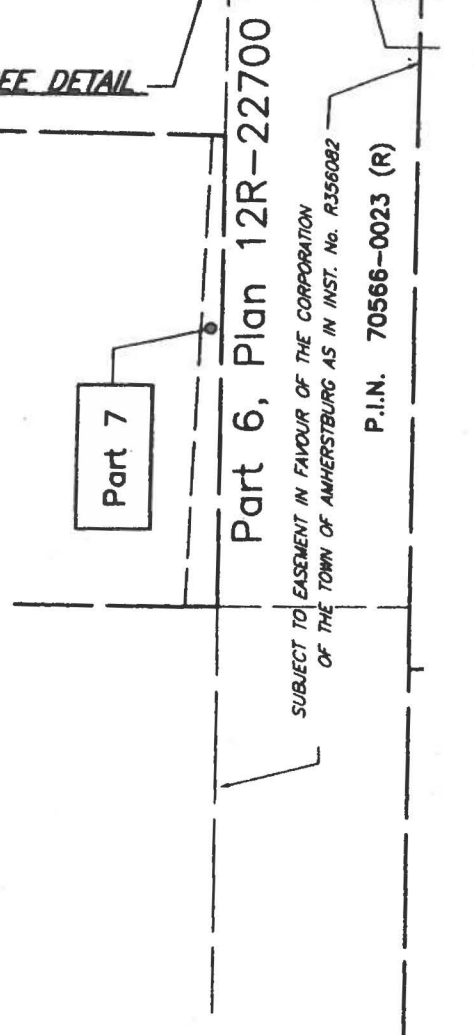
P. I. N. 7 0 5 6 6 - 0 0 5 8 (LT)



LOT 3



DETAIL
Not to Scale



SUBJECT TO EASEMENT IN FAVOUR OF THE CORPORATION OF THE TOWN OF AMHERSTBURG AS IN INST. No. R356082
P.I.N. 70566-0023 (R)

PARTS SCHEDULE—LAND TITLES		PARTS SCHEDULE		
DESCRIPTION	P.I.N.	PART	AREA	DESCRIPTION
PART OF LOT 3, CONCESSION 1	PART OF 70566-0058	3	m ²	PART OF LOT 3, CONC
PART OF BLOCK 'A', PLAN M-83	PART OF 70566-0059	4	m ²	

PRISES PART OF P.I.N. 70566-0058(LT)
 PRISES PART OF P.I.N. 70566-0059(LT)
) 4 COMPRISE PART OF P.I.N. 70566-0023(R)

PARTS 1 to 4 (Incl.) ARE SUBJECT TO AN EASEMENT AS SET ()
 PARTS 3 and 4 ARE SUBJECT TO AN EASEMENT AS SET OUT II

Part 6, Plan 12R - 7447

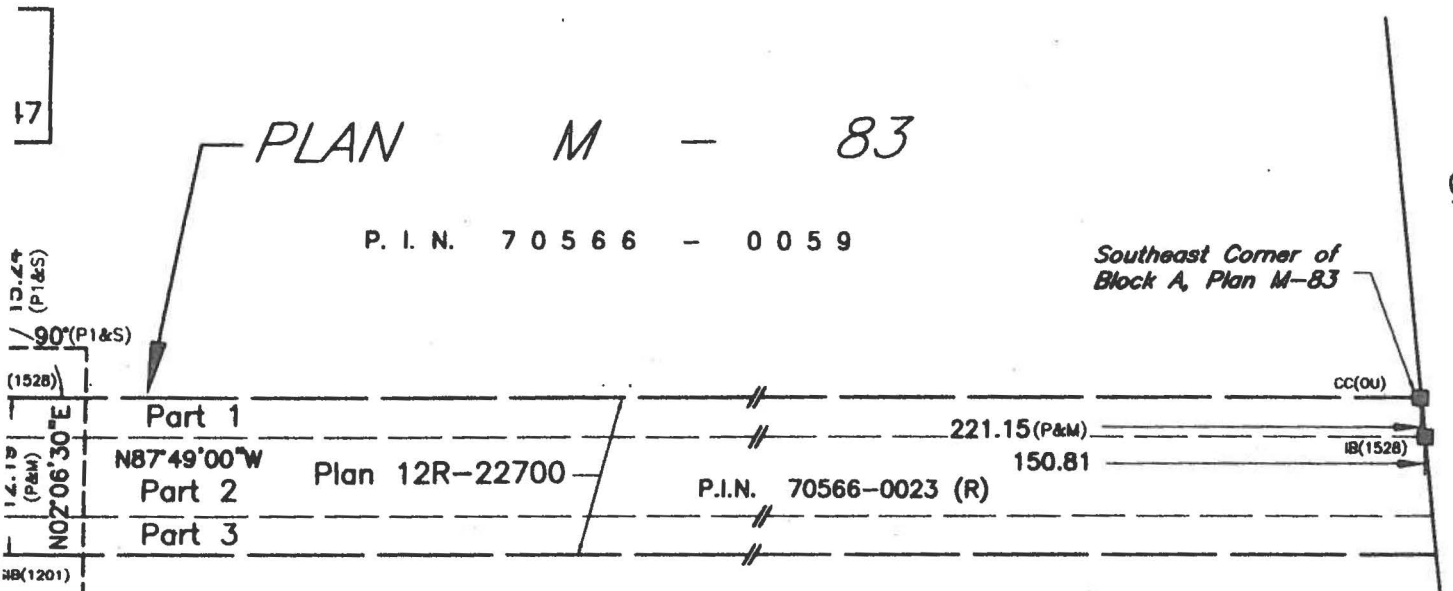
BLOCK 'A'

PLAN M - 83

P. I. N. 7 0 5 6 6 - 0 0 5 9

Southeast Corner of Block A, Plan M-83

SANDWICH



PART 4

Plan 12R-7530

C O N C E S S I O N 1

Part 2

"METRIC" DISTANCES SHOWN ON THIS PLAN ARE IN METRES AND CAN BE CONVERTED TO FEET BY DIVIDING BY 0.3048

ARTS SCHEDULE—LAND TITLES **PARTS SCHEDULE**

	DESCRIPTION	P.I.N.	PART	AREA	DESCRIPTION
m ²	PART OF LOT 3, CONCESSION 1	PART OF 70566-0058	3	m ²	PART OF LOT 3, CONC
m ²	PART OF BLOCK 'A', PLAN M-83	PART OF 70566-0059	4	m ²	

COMPRISES PART OF P.I.N. 70566-0058(LT)
 COMPRISES PART OF P.I.N. 70566-0059(LT)
 AND 4 COMPRISE PART OF P.I.N. 70566-0023(R)

PARTS 1 to 4 (Incl.) ARE SUBJECT TO AN EASEMENT AS SET ()
 PARTS 3 and 4 ARE SUBJECT TO AN EASEMENT AS SET OUT II

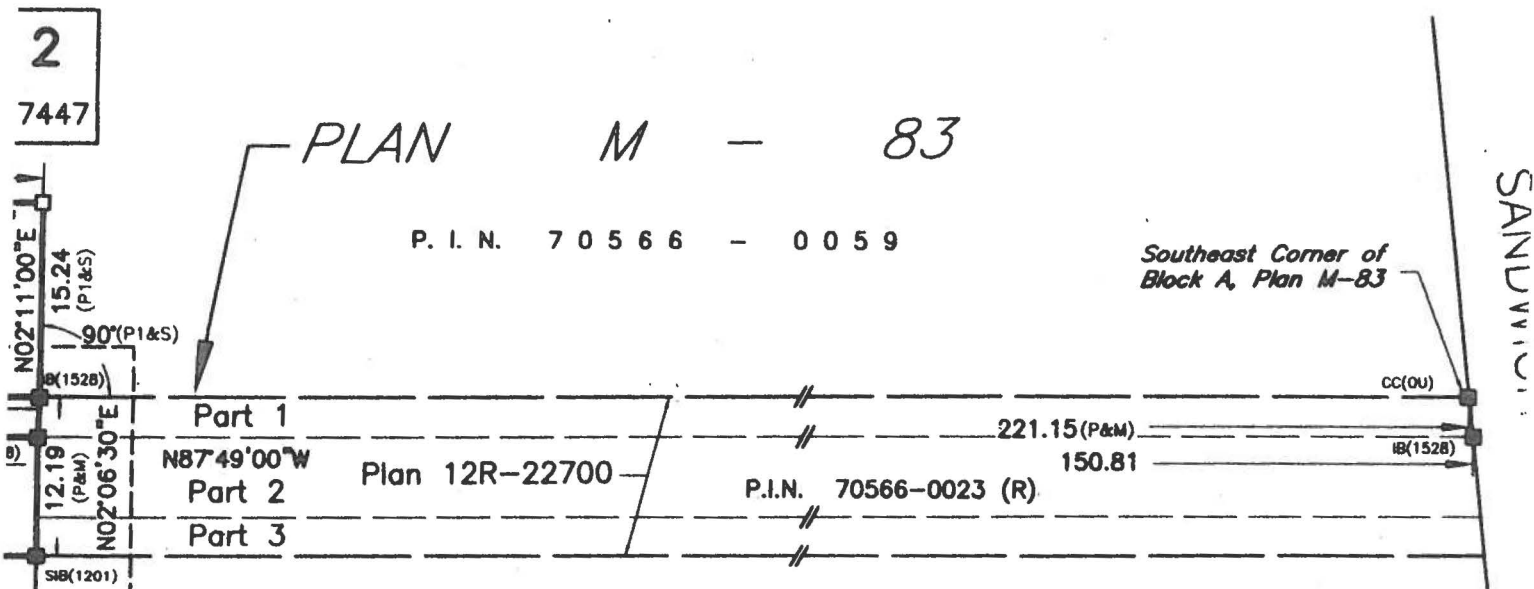
Part 6, Plan 12R - 7447

BLOCK 'A'

PLAN M - 83

P. I. N. 7 0 5 6 6 - 0 0 5 9

Southeast Corner of Block A, Plan M-83



2
7447

PART 4

Plan 12R-7530

CONCESSION 1

Part 2

"METRIC" DISTANCES SHOWN ON THIS PLAN ARE IN METRES AND CAN BE CONVERTED TO FEET BY DIVIDING BY 0.3048