



TOWN OF AMHERSTBURG SPECIAL COUNCIL MEETING

AGENDA

Electronic Meeting
Public Participation via Livestream
<https://www.amherstburg.ca/livestream>

Monday, June 14, 2021

4:00 PM

For information pertaining to this agenda or to arrange for any additional accessibility needs please contact Tammy Fowkes, Deputy Clerk at tfowkes@amherstburg.ca

Information will be gathered in accordance with the Municipal Freedom of Information and Protection of Privacy Act (MFIPPA). All comments and communications received will become part of the public record unless you expressly request the Town to remove it. If you want to learn more about why and how the Town collects your information, write to the Town Clerk's Office, 271 Sandwich Street South, Amherstburg, ON N9V 2A5 or call 519-736-0012.

Pages

- 1. CALL TO ORDER**
- 2. ROLL CALL**
- 3. DISCLOSURE OF PECUNIARY INTEREST & GENERAL NATURE THEREOF**

4. PRESENTATION

- 4.1. Community Safety and Well-Being Plan, Engagement & Project Update -
Leonardo Gil, Project Manager, City of Windsor**

3

That the presentation **BE RECEIVED**.

5. ADJOURNMENT

That Council adjourn from Special session at p.m.

Windsor-Essex Regional Community Safety and Well-Being Plan

Town of Amherstburg- Update Presentation

Presentation Date: June 14, 2021

Presented By: **Leonardo Gil**, Project Manager
City of Windsor



WINDSOR ESSEX REGIONAL
**COMMUNITY SAFETY
& WELL-BEING PLAN**



In partnership with



County of
Essex



Overview

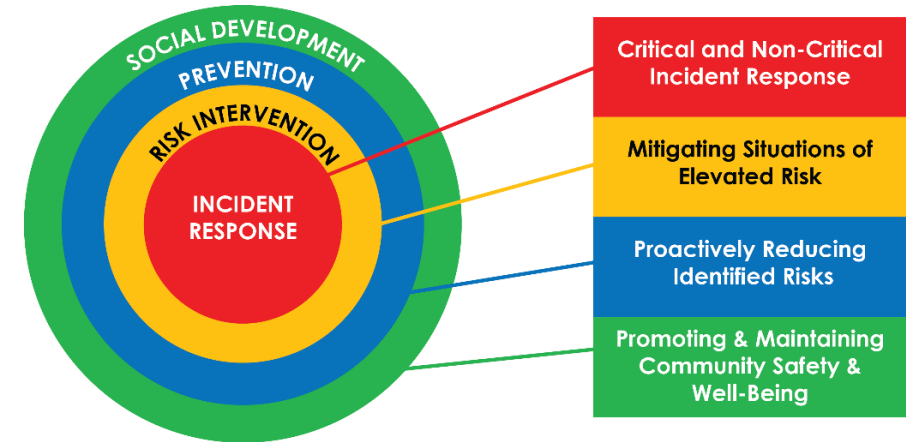
- Project Background
- Public Consultation: Promotion and Methodology
- A Focus on Amherstburg
- Next Steps
- Your Input



Project Background

What is Community Safety and Well-Being Planning?

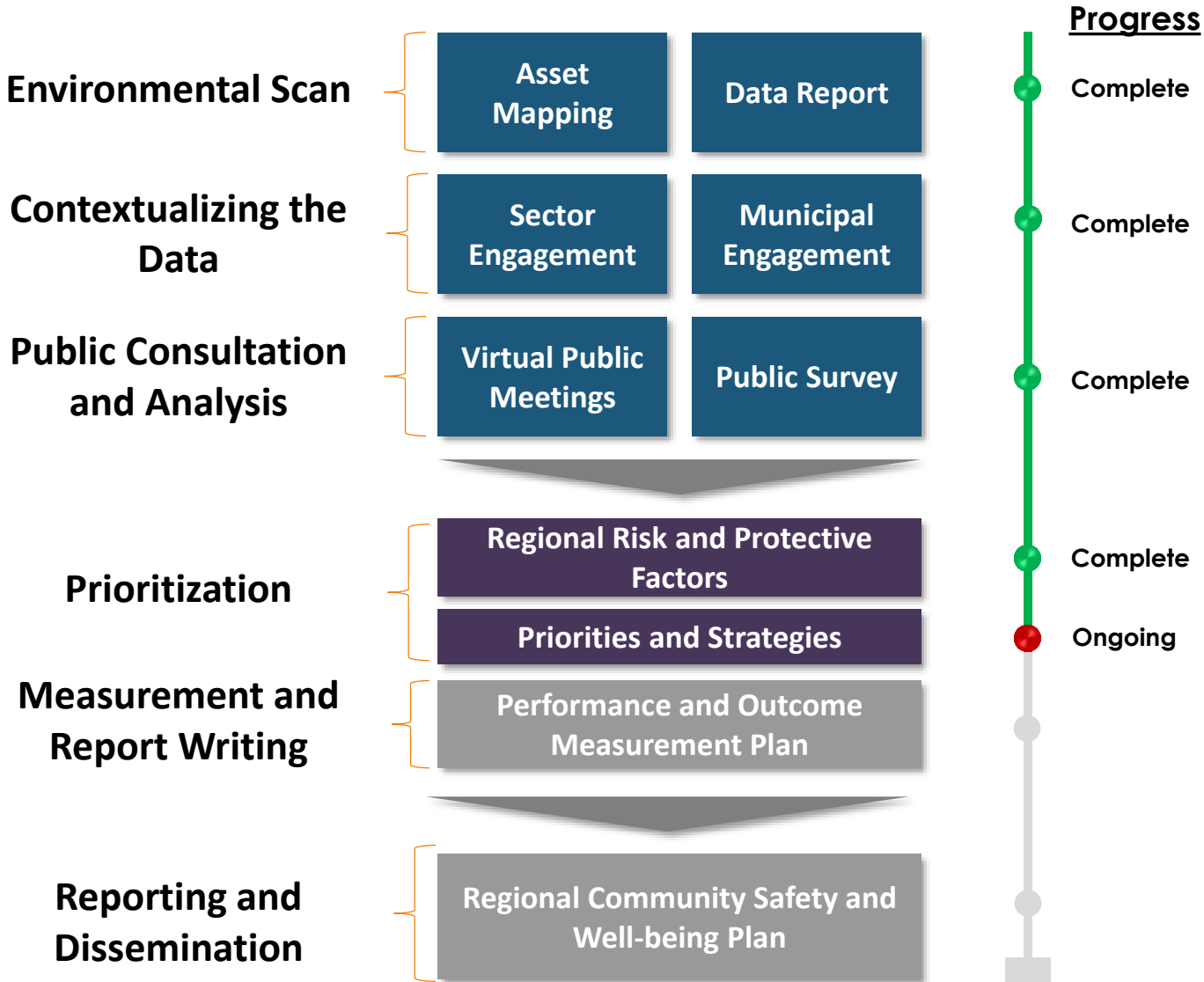
- An approach that uses multi-sector partnerships to proactively enhance or develop strategies to address local priorities (e.g. risk factors) related to crime and complex social issues.
- Emphasizes preventative or “upstream” interventions and activities.



The Windsor Essex Approach

- Plan is being guided by the ***Regional CSWB Systems Leadership Table*** and the ***Enhanced Sector Network***.
- Will create a Regional Plan that includes regional recommendations as well as appendices for each municipality consisting of:
 - Community data profiles
 - Identified priority risks and protective factors
 - Identified assets
 - Analysis of public consultation data
- Upon Council(s) endorsement of the Plan, partners can work toward implementing shared goals and strategies.
- The plan will be a living document which involves an ongoing process of issue identification and planning through continued collaboration with community organizations, leaders and residents.

Project Recap: Steps Taken So Far



Public Consultation: Methodology

Methodology: Using Risk and Protective Factors

- The public consultations utilized surveys and virtual public meetings to identify local priorities and issues across **7 Risk and Protective Factor Categories** as well as **COVID-19**.
- The categories were established through the support of the data team and by amalgamating existing categories used by the Province (CSWB Framework), Ontario Situation Tables and work completed by the Canadian Municipal Network on Crime Prevention (CMNCP).

Risk and Protective Factor Categories

Crime and
Victimization

Education

Financial
Security

Mental Health and
Substance Use

Physical
Health

Housing and
Neighbourhoods

Vulnerable
Populations



COVID-19

Public Consultation Questions

- Both Survey and Breakout Group Questions were created to align with risk and protective factor categories.
- Questions were used to identify priority risks and the top issues that residents would like to see addressed via the plan
- All responses were broken down by municipality

Survey Summary

Online Survey:

- **Total Visits:** Over 1,500 respondents
- **Total Completed Online Surveys:** 829 surveys
- **Survey Window:** 33 days (Feb 10- Mar. 15, 2021)
- Surveys were translated in French, Spanish and Arabic.
 - A total of 9 surveys were collected.
 - French Surveys were shared through CSC Providence
 - Spanish Surveys were shared through HUB Connect
 - Arabic Surveys were promoted through WE LIP

Print Surveys:

- A Total of 200 surveys were provided to the Windsor Essex Community Housing Corporation (150), the Community Partnership (41) and H4: The Homelessness and Housing Help Hub (9).
- Overall, 11 completed surveys were collected.

Table 1. Distribution by Survey Type

Survey Type	Totals
English	820
Print Surveys	11
French	6
Spanish	2
Arabic	1
Grand Total	840

Table 2. Survey Distribution by Municipality

Municipality	Total
City of Windsor	361
Municipality of Lakeshore	82
Municipality of Leamington	64
Town of Amherstburg	74
Town of Essex	50
Town of Kingsville	43
Town of LaSalle	112
Town of Tecumseh	54
Grand Total	840

Regional Priorities

Ranked Risk Category Priorities Across Municipalities	Most Frequently Reported Issues Across Municipalities		Amherstburg	Essex	Kingsville	Lakeshore	LaSalle	Leamington	Tecumseh	Windsor
#1 Housing & Neighbourhoods	Affordable and/or attainable housing	8/8								
	Access to affordable leisure activities for children	5/8								
	Resident and community safety	5/8								
	Access to social/support services	4/8								
	Homelessness	2/8								
	Traffic Safety	1/8								
#2 Mental Health & Substance Use	Access to mental health services	7/8								
	Access to addiction services	7/8								
	Mental health issues	7/8								
#3 Education	Employment skills development	4/8								
	Specialized education programs	4/8								
#4 Financial Security	Employment opportunities	3/8								
	Access to income supports	3/8								
	Poverty	2/8								
	Protection for workers	1/8								
#5 Crime & Victimization	Crime prevention	1/8								
	Support for victims	1/8								
	Bullying/harassment in schools	1/8								
	Intimate partner/domestic abuse	1/8								
#6 Physical Health	Access to physical health services	1/8								
	Long term care	1/8								
	Public health supports and infrastructure	1/8								
#7 Vulnerable Populations	No Municipalities Ranked Venerable Populations in their top three risk categories		Page9							7

Virtual Public Summary

Virtual Public Meetings

- Through a partnership with the Windsor Accessibility Advisory Committee (WAAC) live closed captioning for the hard of hearing and deaf was provided at all virtual public meetings. Additionally, closed captioning was available in French, Spanish and Arabic.
- While American Sign Language was offered for each meeting, participants did not indicate a need for the service.
- Overall, **139 residents** attended the public meetings.

Additionally, a tele-conference session was held for seniors from across Windsor-Essex through the *Seniors Centre Without Walls* initiative, a Life After Fifty program.

Table 3. Participation by Consultation Session

Session	Registered	Attendees	Participation Rate
Windsor Session 1	41	28	68%
Amherstburg	16	15	94%
Tecumseh	17	14	82%
LaSalle	17	11	65%
Lakeshore	24	16	67%
Windsor Session 2	27	15	56%
Essex	18	14	78%
Kingsville	19	16	84%
Leamington	16	10	63%
Grand Totals	195	139	71%

Public Comments (1/2)

Housing and Neighbourhoods

On Building and Protecting Communities:

“We need to find ways of attracting people into the community and allowing our young people to stay, they are currently being driven out, and we need to support them with local affordable housing, education opportunities, economic development, and mobility.”

– Essex Resident

“The development of community groups for seniors, and youth to promote a sense of belonging in the community.”

– LaSalle Resident

“We need to maintaining stable residential neighbourhoods, they have to be protected from commercialization, becoming transient communities, or being bought up as investments.”

– Lakeshore Resident

“We need to find ways of keeping the community connected and engaged, during and after the pandemic. The open-air markets over the summer were a great way to promote a sense of community and support local businesses.”

– Amherstburg Resident

“We need better communication tools for Town leaders and residents to stay updated on community news, service updates, awareness of local issues, and crime like online scams etc.”

– LaSalle Resident

On Affordable Housing:

“We need more mixed-income housing, that doesn’t lock people out of the market.”

– Kingsville Resident

“The Municipality needs to open more land to housing. Specifically affordable housing. The Province needs to step in to, but the town needs to have the land put aside.”

– Tecumseh Resident

On Homelessness:

“There is a lot of visible homelessness, mental health, and substance use issues in the downtown. These groups are really stigmatized, and it makes people less likely to visit the downtown.”

– Windsor Resident

“Homelessness is a big issue, there is no shelter available, and you see a lot of young people couch surfing to stay off the street.”

– Kingsville Resident

On Traffic Safety:

“We need to look into more ways to calm traffic and enforce traffic safety, need more radar, OPP visibility, traffic calming zones, roundabouts etc.”

– Lakeshore Resident

“Road safety for cyclist and pedestrians. Maybe signs or PSAs to remind people where to walk, bike, and park, especially where there are no sidewalks.”

– Tecumseh Resident

Public Comments (2/2)

Mental Health and Substance Use

On Awareness:

“People need to be made aware of existing support opportunities; they don’t know what mental health, social, or financial supports are out there. It can be hard to find the information you need.”

– Amherstburg Resident

“We need to de-stigmatize and better communicate with people the services they have access to, and then help them navigate those services.”

– Windsor Resident

On Access:

“Mobility and access to services should be a priority. Most mental health and addition services are focused in the urban core.”

– Lakeshore Resident

“Need to address the mobility issues around access, leverage both digital and virtual tools.”

– Leamington Resident

“We need more accessible transportation options, within and between municipalities, like busses or even taxis.”

– Essex Resident

Education

“School closures have had a major impact on youth and the whole community. Youth need to travel farther to get to school, and all the supports and benefits the school provides. They have a harder time accessing co-op programs, extracurriculars, volunteering and social opportunities. School locations also impact where people decide to live and work, which impacts the while community.”

– Essex Resident

“We need to address the structural inequity that are barriers to basic determinants of health. When people have food, housing, and education, that has major spill over effects.”

– Windsor Resident

Financial Security

“The community needs to support families and individuals that has more barriers to access services, like financial insecurity or lack of transit options.”

– Amherstburg Resident

“Windsor had the highest child poverty rate in Canada in 2016. The unequal distribution of life chances and opportunity concentrates all the risks into already marginalized communities, creating these pockets of real of perceived unsafety directly linked to economic inequalities.”

– Windsor Resident

Crime and Victimization

“There seems to be more property crime recently. It’s very violating to have people break into your property.”

– Leamington Resident

Physical Health

“There is a lack of available health services, there is a shortage of family doctors, and no local access to mental health services. Everything is focused in Windsor”

– Kingsville Resident

Vulnerable Populations

“We need to figure out how to better identify, engage, support, and advocate for vulnerable populations through collaboration between service providers and all levels of government.”

– Windsor Resident

“Targeted support for migrant workers, how do we account for these populations and make sure they are considered in how we distribute resources.”

– Leamington Resident



Town of Amherstburg

Consultation Summary

Consultation Details

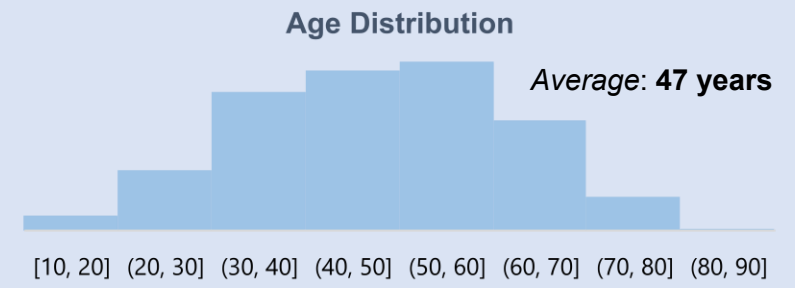
Public Meeting Date | Thursday, February 25, 2021 - 6:30 p.m.

Survey Submissions | 74

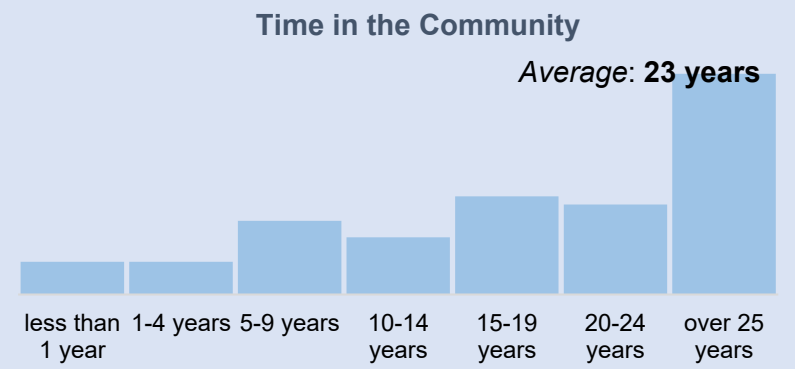
Consultation Highlights

- Amherstburg’s top reported priorities were 1) **Housing and Neighbourhoods**, 2) **Mental Health and Substance Use**, and 3) **Financial Security and Employment**
- Respondents **overwhelmingly feel safe** in their community (90%)
- Most respondents **reported they trust the police** (65%) and approximately the same amount are **satisfied with the level of policing** in the community
- Slightly more respondents were **unsatisfied with housing and social supports** (45%) in the community compared to those who were satisfied (35%)
- Most respondents were **satisfied with their community’s recreation and leisure opportunities and parks and green spaces** (75-90%)
- Most respondents reported they were **unsure about their satisfaction with the community’s mental health and addition resources** (40-50%). However, more respondents were unsatisfied with (35-40%), then satisfied (>20%)
- Respondent where **evenly split on their satisfaction with financial assistance opportunity and employment service** between those who were satisfied, dissatisfied, and unsure
- Major themes of the Public Meeting were **affordable housing, access to support services, and support for the business community.**

Survey Demographic Details



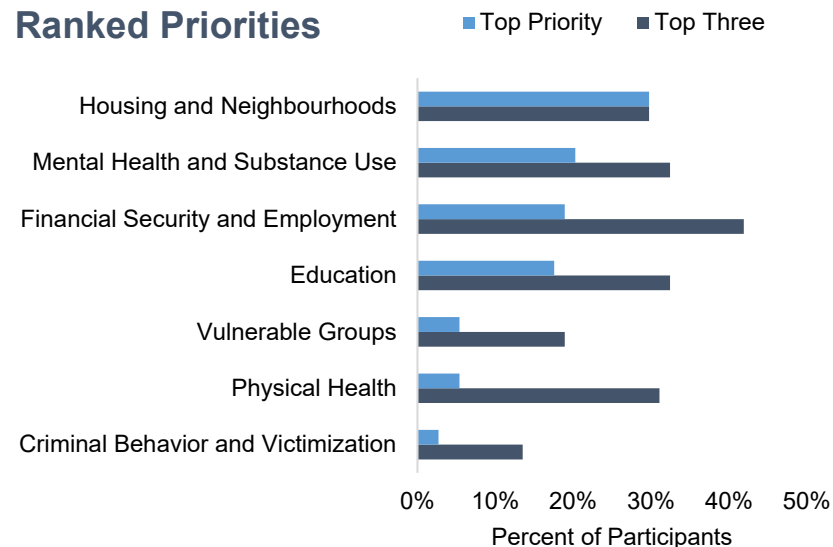
Identify as 2SLGBTQ+		Racial/Ethnic Identity	
9%		81%	White or Caucasian
		14%	Prefer not to say
		3%	Prefer to specify
		1%	Black
		1%	East or Southeast Asian
		1%	Indigenous
		1%	Latino or Hispanic
		1%	Middle Eastern
		0%	South Asian



*Percentages are of all responses from the municipality rounded to the nearest 5%

Community Priorities

Ranked Priorities



Top 3 Categories

Top Issues

1. Housing and Neighbourhoods	• Affordable and/or attainable housing	67%
	• Access to affordable leisure activities for children	61%
	• Access to social/support services	35%
2. Mental Health and Substance Use	• Access to mental health services	77%
	• Access to addiction services	77%
	• Mental health issues	59%
3. Financial Security and Employment	• Employment opportunities	82%
	• Access to income supports	36%
	• Poverty	26%

Percentage of respondents who selected each issue as a top priority*

Public Remarks

During the Community Meeting we heard many of the priorities raised in the public survey repeated or expanded on.

On Housing:

- *“Amherstburg needs a better supply and access to rental housing, affordable housing, and supportive housing.”*

On Access to Services:

- *“The community needs to support families and individuals that has more barriers to access services, like financial insecurity or lack of transit options.”*
- *“There need to be more opportunities to connect with other people, through organized activities, counselling, or other mental health supports.”*
- *“People need to be made aware of existing support opportunities; they don’t know what mental health, social, or financial supports are out there. It can be hard to find the information you need.”*

On the Business Community:

- *“We need to find ways of keeping the community connected and engaged, during and after the pandemic. The open-air markets over the summer were a great way to promote a sense of community and support local businesses.”*
- *“We need to keep Amherstburg’s business community vibrant. Small businesses need to be support through the pandemic with more PPE and income supports, if they are going to make it.”*

Factors Impacting Safety and Wellbeing

Public Remarks

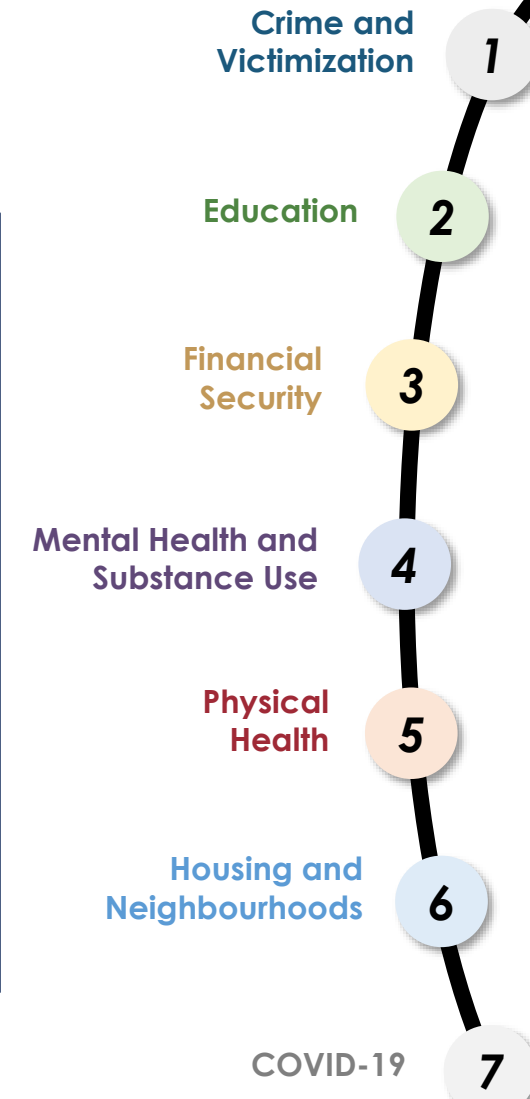
Generally, residents told us Amherstburg feels like a safe community, and this was mostly attributed to its engaged and connected community. A number of issues that negatively impacted resident's sense of safety and wellbeing were raised, especially around affordable housing, traffic safety, barriers to community engagement, and mental health issues.

On Positive Factors

- *"People feel safe in Amherstburg, this comes from having neighbourhoods where you know everyone in the community. We look out for each other."*
- *"Many big cities feel less safe than Amherstburg. I feel safer raising kids here and walking home from work."*
- *"The community is very active and engaged, there are always opportunities to bring the community together at events, charitable causes, etc..."*

On Negative Factors

- *"We have an affordable housing crisis. The next generation can't afford to buy and there is nothing available to rent. Unless things change, our kids won't be able to stay."*
- *"Low-income seniors face an 8-year waitlist for housing!"*
- *"I'm concerned about how accessible community engagement is for some people in the community, whether its financial insecurity or few transit options, not everyone is able to participate and benefit from community participation."*
- *"Generally, mental health issues are on the rise; and it can impact anyone, young to old."*
- *"Amherstburg's trails, parks, and open spaces are wonderful, but they also attract a lot of traffic. It's led to more speeding complaints, especially in school zones!"*





Next Steps

Regional Priorities and Opportunities

Priority Categories
“We want to have...”

“Engaged & Safe Communities”

“Mental Health & Substance-Use Supports”

“Financial Security & Economic Equity”

“Good Governance & Data”

Opportunities
“To reach our priorities we need...”

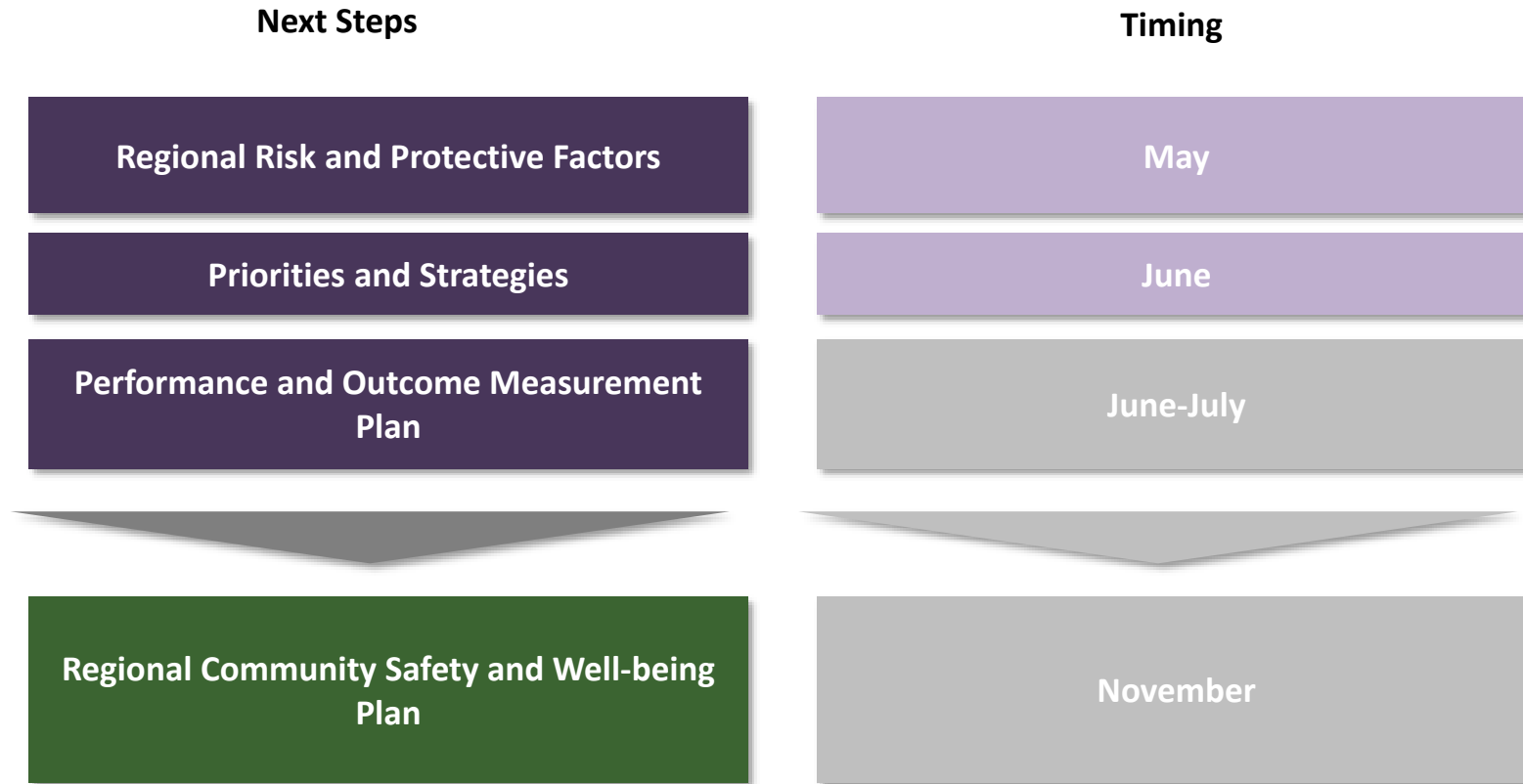
- Access to affordable housing to keep people living and working in their Communities, and supportive and transitional housing for those without.
- More opportunities for community engagement and participation through community spaces and programs, particularly for youths.
- Infrastructure that promotes active transportation and community safety.
- Improved relationships between communities and the police.

- Increased awareness and destigmatization of existing supports and resources to improve prevention, early intervention and treatment.
- Reduced mobility barriers to accessing services.
- Improved system navigation for those accessing services, particularly to support diverse needs and sensitivities of vulnerable populations.
- Improved emergency response to those in crisis.

- Accessible employment skills training that matches local employment opportunities for those entering and transitioning in the work force.
- Aligning and leveraging existing supports and services for those facing poverty or financial insecurity as well as understanding and addressing service gaps.
- Targeted support for systemically marginalized demographic groups and locations.

- Reduced barriers amongst providers
- Representation and inclusion in CSWB governance
- Improved data (Inclusion, Cross sector and segmented analysis)
- Continual community engagement

Finishing the Plan



Your Input

Questions for discussion:

1. Does the information presented here align with your views on community safety in your community?
 - Is there a priority that is important to safety and well-being in your community that is not on the list?
2. How can we measure success in your community as we work to implement the CSWB plan?
 - What does success look like in the short-term
 - What does success look like in the long-term?